

Appendix A: Species Lists

THE NESCOPECK CREEK WATERSHED ASSESSMENT

Common Name	Order	Family/Genus
Segmented Worm	Oligochaeta	
Sowbugs	Isopoda	asellua
Mayflies	Ephemeroptera	Isonychia
	Ephemeroptera	Baetis
	Ephemeroptera	Paraleptophlebia
	Ephemeroptera	Stenonema
	Ephemeroptera	Heptagenia
	Ephemeroptera	Epeorus
	Ephemeroptera	Stenacron
	Ephemeroptera	Ephemerella
	Ephemeroptera	Eurylophella
	Ephemeroptera	Serratella
	Ephemeroptera	Drunella
Stone Flies	Plecoptera	Tellaperla
	Plecoptera	Leuctra
	Plecoptera	Perlesta
	Plecoptera	Paragnetina
	Plecoptera	Claassinia
	Plecoptera	Acroneuria
	Plecoptera	Ahloroperlidae
	Plecoptera	Phasganophora
Caddis Flies	Tricoptera	Hydropsyche
	Tricoptera	Cheumatopsyche
	Tricoptera	Diplectrona
	Tricoptera	Chimarra
	Tricoptera	Dolophilodes
	Tricoptera	Rhyacophila
	Tricoptera	Micrasema
	Tricoptera	Brachycentrus
	Tricoptera	Pycnopsyche
	Tricoptera	Glossosoma
Tricoptera	Polycentropus	
Dragon Flies	Odonata	Boyeria
	Odonata	Ophiogomphus
	Odonata	Hagenius
	Odonata	Gomphidae
	Odonata	Lanthus
	Odonata	Cordulegaster
Hellgrammite	Megaloptera	Sialis
	Megaloptera	Nigronia
Beetles	Coleoptera	Psephenus
	Coleoptera	Elmidae
	Coleoptera	Stenelmis
	Coleoptera	Macronychus
	Coleoptera	Promoresia
	Coleoptera	Dubiraphia
	Coleoptera	Oulimnius
	Coleoptera	Cleptelmis
	Coleoptera	Optioservus
Coleoptera	Dyticidae	
True Flies	Diptera	Chironmidiae
		Tipulidae
		Simuliidae
		Emphididae

Table A.1 Aquatic macroinvertebrates documented in the 1998 DEP survey of the Nescopeck Creek watershed (Source: Kupsky 1998).

THE NESCOPECK CREEK WATERSHED ASSESSMENT

Common Name	Scientific Name
A noctuid moth	<i>Aplectooides condita</i>
Artic skipper	<i>Carterocephalus palaemon mandan</i>
A sawfly moth	<i>Chaetagnaea cerata</i>
Harris' Checkerspot	<i>Chlosyne harrisii</i>
Pointed sawfly	<i>Epignaea apiata</i>
Persius duskywing	<i>Erynnis persius persius</i>
Blueberry gray	<i>Glena cognataria</i>
Barrens buckmoth	<i>Hemileuca maia</i>
Leonard's skipper	<i>Hesperia leonardus</i>
Barrens itame (cf i.Inextricata)	<i>Itame sp 1</i>
Bog copper	<i>Lycaena epixanthe</i>
Footpath sawfly moth	<i>Metaxagnaea semitaria</i>
A moth	<i>Panthea sp 1</i>
Flypoison borer moth	<i>Papaipema sp 1</i>
Pink sawfly	<i>Psectragagnaea carnososa</i>
Gordian sphinx	<i>Sphinx gordius</i>
A moth	<i>Syngrapha epignaea</i>

Table A.2 Invertebrates of special concern of Luzerne County (Source: The Pennsylvania Science Office of The Nature Conservancy. 2001.A Natural Areas Inventory, Luzerne County, PA. Middletown).

Common Name	Scientific Name
Spotted salamander*	<i>Ambystoma maculatum</i>
Red-spotted newt*	<i>Notophthalmus viridescens</i>
Northern dusky salamander*	<i>Desmognathus fuscus</i>
Mountain dusky salamander	<i>Desmognathus ochrophaeus</i>
Northern two-lined salamander	<i>Eurycea bislineata</i>
Redback salamander*	<i>Plethodon cinereus</i>
Northern red salamander	<i>Peudotriton ruber</i>
Eastern american toad*	<i>Bufo americanus</i>
Spring peeper*	<i>Hyla crucifer</i>
Eastern gray treefrog*	<i>Hyla versicolor</i>
Bullfrog*	<i>Rana catesbeiana</i>
Northern green frog*	<i>Rana clamintans</i>
Pickrel frog*	<i>Rana palustris</i>
Wood frog	<i>Rana sylvatica</i>

Table A.3 Amphibians found in the Little Nescopeck Creek watershed (Source: Kocher et al. 2000. Little Nescopeck Creek Watershed Conservation Management Plan).

*Species known to breed in the watershed are noted with an asterisk.

Common Name	Scientific Name
Snapping turtle*	<i>Chelydra serpentina</i>
Midland painted turtle*	<i>Chrysemys picta</i>
Northern ringneck snake	<i>Diadophis punctatus</i>
Black rat snake	<i>Elaphe obsoleta</i>
Eastern milk snake	<i>Lampropeltis triangulum</i>
Northern water snake	<i>Nerodia sipedon</i>
Eastern garter snake	<i>Thamnopsis sirtalis</i>
Northern copperhead	<i>Agkistrodon contortix</i>

Table A.4 Reptiles found in the Little Nescopeck Creek watershed (Source: Kocher et al. 2000. Little Nescopeck Creek Watershed Conservation Management Plan).

THE NESCOPECK CREEK WATERSHED ASSESSMENT

Common Name	Scientific Name
Canada goose*	<i>Branta canadensis</i>
Mallard*	<i>Anas platyrhynchos</i>
Wood duck	<i>Aix sponsa</i>
Ring-billed gull	<i>Larus delawarensis</i>
Great blue heron	<i>Ardea herodias</i>
Great egret	<i>Casmerodius albus</i>
Green heron	<i>Butorides striatus</i>
Virginia rail	<i>Rallus limicola</i>
Killdeer	<i>Charadrius vociferous</i>
American woodcock	<i>Philohela minor</i>
Wild turkey	<i>Meleagris gallopavo</i>
Ruffed grouse	<i>Bonasa umbellus</i>
Ring-necked pheasant	<i>Phasianus colchicus</i>
Sharp-shinned hawk	<i>Accipiter striatus</i>
Cooper's hawk	<i>Accipiter cooperii</i>
Northern goshawk	<i>Accipiter gentilis</i>
Northern harrier	<i>Circus cyaneus</i>
Red-tailed hawk	<i>Buteo jamaicensis</i>
Broad-winged hawk	<i>Buteo platypterus</i>
Osprey	<i>Pandion haliaetus</i>
Turkey vulture	<i>Cathartes aura</i>
American kestrel	<i>Falco sparverius</i>
Eastern screech owl	<i>Otus asio</i>
Great horned owl	<i>Bubo virginianus</i>
Mourning dove	<i>Zenaida macroura</i>
Rock dove	<i>Columba livia</i>
Ruby-throated hummingbird	<i>Archilochus colubris</i>
Belted kingfisher	<i>Megacerle alcyon</i>
Pileated woodpecker	<i>Dryocopus pileatus</i>
Northern flicker*	<i>Colaptes auratus</i>
Red-bellied woodpecker*	<i>Melanerpes carolinus</i>
Hairy woodpecker	<i>Picoides villosus</i>
Eastern wood pewee	<i>Contopus virens</i>
Acadian flycatcher	<i>Empidonax flaviventris</i>
Least flycatcher	<i>Empidonax minimus</i>
Alder flycatcher*	<i>Empidonax alnorum</i>
Horned lark	<i>Eremophila alpestris</i>
Barn swallow*	<i>Hirundo rustica</i>
Tree swallow*	<i>Iridoprocne bicolor</i>
Rough-winged swallow*	<i>Stelgideopteryx ruficollis</i>
Chimney swift*	<i>Chaetura pelagica</i>
Fish crow	<i>Corvus ossifragus</i>
America crow*	<i>Corvus brachyrhynchos</i>
Blue jay	<i>Cyanocitta cristata</i>
Black-capped chickadee*	<i>Parus atricapillus</i>
Tufted titmouse*	<i>Parus bicolor</i>
White-breasted nuthatch*	<i>Sitta carolinensis</i>

*Species known to breed in the watershed are noted with an asterisk.

THE NESCOPECK CREEK WATERSHED ASSESSMENT

Common Name	Scientific Name
Great-crested flycatcher	<i>Myiarchus crinitis</i>
Eastern phoebe*	<i>Sayornis pheobe</i>
American redstart*	<i>Setophaga ruticilla</i>
Yellow warbler	<i>Dendrocia petechia</i>
Common yellowthroat*	<i>Geothlypis trichas</i>
Ovenbird*	<i>Seiurus aurocapillus</i>
Red-winged blackbird*	<i>Agelaius phoeniceus</i>
Brown-headed cowbird*	<i>Molothrus ater</i>
Common grackle*	<i>Quiscalus quiscula</i>
Bobolink*	<i>Dolichonyx oryzivorus</i>
Eastern meadowlark*	<i>Stumella magna</i>
European starling*	<i>Sturnis vulgura</i>
Baltimore oriole*	<i>Icterus galbula</i>
Scarlet tanager*	<i>Piranga olvacea</i>
Dark-eyed junco	<i>Junco hyemalis</i>
Downy woodpecker*	<i>Picoides pubescens</i>
Northern cardinal*	<i>Cardinalis cardinalis</i>
House finch*	<i>Carpodacus mexicanus</i>
American goldfinch*	<i>Carduelis tristis</i>
Indigo bunting*	<i>Passerina cyanea</i>
Rose-breasted grosbeak	<i>Pheucticus ludovicianus</i>
Eastern towhee	<i>Pipilo erythrophthalmus</i>
White-throated sparrow	<i>Zonotrichia albicollis</i>
Chipping sparrow*	<i>Spizella passerina</i>
Field sparrow	<i>Spizella pussila</i>
American tree sparrow	<i>Spizella arborea</i>
Song sparrow*	<i>Melospiza melodia</i>
House Sparrow*	<i>Passer domesticus</i>
Eastern kingbird	<i>Tyrannus tyrannus</i>
Yellow-rumped warbler	<i>Dendrocia coronata</i>
Chestnut-sided warbler	<i>Dendrocia penyslvania</i>
Yellow-bellied sapsucker	<i>Sphyrapicus varius</i>
Red-breasted nuthatch	<i>Sitta canadensis</i>
Brown creeper	<i>Certhia familiaris</i>
House wren*	<i>Troglodytes aedon</i>
Carolina wren	<i>Thryothorus ludovicianus</i>
Ruby-crowned kinglet	<i>Regulus calendula</i>
Golden-crowned kinglet	<i>Regulus satrapa</i>
Blue-gray gnatcatcher	<i>Polioptila caerulea</i>
Brown thrasher	<i>Toxostoma rufum</i>
Gray catbird*	<i>Dumetella carolinensis</i>
Northern mockingbird*	<i>Mimus polyglottos</i>
Eastern bluebird*	<i>Sialia sialis</i>
American robin*	<i>Turdus migratorius</i>
Wood thrush	<i>Hyocichla mustelina</i>
Cedar waxwing	<i>Bombycilla cedrorum</i>
Red-eyed vireo*	<i>Vireo olivaceus</i>
Black-throated green warbler	<i>Dendroica virens</i>
Black-and-white warbler	<i>Mniotilta varia</i>

Table A.5 Birds in the Little Nescopeck Creek Watershed (Source: Kocher et al. 2000. Little Nescopeck Creek Watershed Conservation Management Plan).

THE NESCOPECK CREEK WATERSHED ASSESSMENT

Common Name	Scientific Name
Shorttail shrew	<i>Blarina brevicauda</i>
Coyote	<i>Canis latrans</i>
Beaver	<i>Castor canadensis</i>
Red-backed vole	<i>Clethrionomys gapperi</i>
Star-nosed mole	<i>Condylura cristata</i>
Opposum	<i>Didelphis marsupialis</i>
Big Brown Bat	<i>Eptesicus fuscus</i>
Porcupine	<i>Erethizon dorsatum</i>
Southern flying squirrel	<i>Glaucomys volans</i>
Silver-haired bat	<i>Lasiurus noctivagus</i>
Striped skunk	<i>Mephitis mephitis</i>
Meadow vole	<i>Mus musculus</i>
Long-tailed weasel	<i>Mustela frenata</i>
Mink	<i>Mustela vison</i>
Little Brown bat	<i>Myotis lucifugus</i>
White-tailed deer	<i>Odocoileus virginianus</i>
Muskrat	<i>Ondatra zibethicus</i>
Hairy-tailed mole	<i>Parascalops breweri</i>
White-footed mouse	<i>Peromyscus leucopus</i>
Deer mouse	<i>Peromyscus maniculatus</i>
Pine vole (pitymys)	<i>pinetorum</i>
Raccoon	<i>Procyon lotor</i>
Northern gray squirrel	<i>Sciurus carolinensis</i>
Eastern cottontail	<i>Sylvilagus floridanus</i>
Eastern chipmunk	<i>Tamias striatus</i>
Red squirrel	<i>Tamias hudsonicus</i>
Gray fox	<i>Urocyon cinereoargenteus</i>
Eastern black bear	<i>Ursus americanus</i>
Red fox	<i>Vulpes fulva</i>

Table A.6 Mammals found in the Nescopeck State Park (Source: The Resource Management Plan, Nescopeck State Park. 2001. The Department of Conservation and Natural Resources. Harrisburg, PA).

THE NESCOPECK CREEK WATERSHED ASSESSMENT

Nescopeck State Park Plant List						
Compiled During Fieldwork 1999-2001						
Scientific name	Family name	Common name	N/I	State	Wetlands	Growth
<i>Acalypha rhomboidea</i>	Euphorbiaceae	Three-seeded mercury	N	N	FACU-	HA
<i>Acer pensylvanicum</i>	Aceraceae	Moosewood	N	N	FACU	TD
<i>Acer platanoides</i>	Aceraceae	Norway maple	I	N	UPL	TD
<i>Acer rubrum</i> var. <i>rubrum</i>	Aceraceae	Red maple	N	N	FAC	TD
<i>Acer saccharum</i> var. <i>saccharum</i>	Aceraceae	Sugar maple	N	N	FACU	TD
<i>Acer spicatum</i>	Aceraceae	Mountain maple	N	N	FACU-	SD
<i>Achillea millefolium</i>	Asteraceae	Common yarrow	I	N	FACU	HP
<i>Actaea pachypoda</i>	Ranunculaceae	Doll's-eyes	N	N	UPL	HP
<i>Actaea rubra</i>	Ranunculaceae	Red baneberry	N	N	UPL	HP
<i>Adlumia fungosa</i>	Fumariaceae	Allegheny-vine	N	N	N	VB
<i>Agrostis capillaris</i>	Poaceae	Rhode Island bent	I	N	N	HP
<i>Agrostis perennans</i>	Poaceae	Autumn bent	N	N	FACU	HP
<i>Agrostis scabra</i>	Poaceae	Fly-away grass	N	N	FAC	HP
<i>Alisma subcordatum</i>	Alismataceae	Broad-leaved water-plantain	N	N	OBL	HP
<i>Alnus incana</i> ssp. <i>rugosa</i>	Betulaceae	Speckled alder	N	N	N	SD
<i>Alnus serrulata</i>	Betulaceae	Smooth alder	N	N	OBL	SD
<i>Ambrosia artemisiifolia</i>	Asteraceae	Common ragweed	N	N	FACU	HA
<i>Amelanchier arborea</i>	Rosaceae	Shadbush	N	N	FAC-	TD
<i>Amelanchier laevis</i>	Rosaceae	Smooth serviceberry	N	N	N	TD
<i>Amelanchier stolonifera</i>	Rosaceae	Low juneberry	N	N	FACU	SD
<i>Amianthium muscaetoxicum</i>	Liliaceae	Fly-poison	N	N	FAC	HP
<i>Amphicarpaea bracteata</i>	Fabaceae	Hog peanut	N	N	FAC	VP/VA
<i>Anagallis arvensis</i>	Primulaceae	Scarlet pimpernel	I	N	UPL	HA
<i>Anaphalis margaritacea</i>	Asteraceae	Pearly everlasting	N	N	N	HP
<i>Andropogon virginicus</i>	Poaceae	Broom-sedge	N	N	FACU	HP
<i>Anemone quinquefolia</i>	Ranunculaceae	Wood anemone	N	N	FACU	HP
<i>Angelica venenosa</i>	Apiaceae	Deadly angelica	N	N	NR	HP
<i>Antennaria howellii</i> ssp. <i>neodioica</i>	Asteraceae	Howell's pussytoe	N	N	N	HP
<i>Antennaria neglecta</i>	Asteraceae	Overlooked pussytoe	N	N	UPL	HP
<i>Antennaria parlinii</i> ssp. <i>parlinii</i>	Asteraceae	Parlin's pussytoe	N	N	N	HP
<i>Anthoxanthum odoratum</i>	Poaceae	Sweet vernal grass	I	N	FACU	HP
<i>Apios americana</i>	Fabaceae	Ground-nut	N	N	FACW	VP
<i>Apocynum cannabinum</i> var. <i>cannabinum</i>	Apocynaceae	Indian-hemp	N	N	FACU	HP
<i>Aquilegia canadensis</i>	Ranunculaceae	Wild columbine	N	N	FAC	HP
<i>Aralia nudicaulis</i>	Araliaceae	Wild sarsaparilla	N	N	FACU	HP
<i>Arctium minus</i>	Asteraceae	Common burdock	I	N	FACU-	HB
<i>Arenaria serpyllifolia</i> ssp. <i>serpyllifolia</i>	Caryophyllaceae	Thyme-leaved sandwort	I	N	N	HA
<i>Arisaema triphyllum</i> ssp. <i>triphyllum</i>	Araceae	Jack-in-the-pulpit	N	N	FACW-	HP
<i>Arisaema triphyllum</i> ssp. <i>stewardsonii</i>	Araceae	Jack-in-the-pulpit	N	N	FACW	HP
<i>Aristida dichotoma</i> var. <i>dichotoma</i>	Poaceae	Povertygrass	N	N	UPL	HA
<i>Aronia arbutifolia</i>	Rosaceae	Red chokeberry	N	N	FACW	SD
<i>Aronia melanocarpa</i>	Rosaceae	Black chokeberry	N	N	FAC	SD
<i>Arrhenatherum elatius</i> var. <i>elatius</i>	Poaceae	Tall oatgrass	I	N	FACU	HP
<i>Artemisia vulgaris</i>	Asteraceae	Common mugwort	I	N	N	HP
<i>Asarum canadense</i> var. <i>canadense</i>	Aristolochiaceae	Wild ginger	N	N	FACU-	HP
<i>Asclepias exaltata</i>	Asclepiadaceae	Poke milkweed	N	N	FACU	HP
<i>Asclepias incarnata</i> var. <i>incarnata</i>	Asclepiadaceae	Swamp milkweed	N	N	OBL	HP
<i>Asclepias syriaca</i>	Asclepiadaceae	Common milkweed	N	N	FACU-	HP
<i>Asplenium platyneuron</i>	Aspleniaceae	Ebony spleenwort	N	N	FACU	HP
<i>Asplenium trichomanes</i>	Aspleniaceae	Maidenhair spleenwort	N	N	N	HP
<i>Aster acuminatus</i>	Asteraceae	Wood aster	N	N	N	HP
<i>Aster divaricatus</i>	Asteraceae	White wood aster	N	N	N	HP
<i>Aster laevis</i> var. <i>concinus</i>	Asteraceae	Smooth blue aster	N	N	N	HP
<i>Aster lateriflorus</i>	Asteraceae	Calico aster	N	N	FACW-	HP
<i>Aster linariifolius</i>	Asteraceae	Stiff-leaved aster	N	N	N	HP
<i>Aster lowrianius</i>	Asteraceae	Smooth heart-leaved aster	N	N	N	HP
<i>Aster macrophyllus</i>	Asteraceae	Bigleaf aster	N	N	N	HP
<i>Aster phlogifolius</i>	Asteraceae	Late purple aster	N	N	N	HP
<i>Aster pilosus</i> var. <i>pilosus</i>	Asteraceae	Heath aster	N	N	UPL	HP
<i>Aster pilosus</i> var. <i>pringlei</i>	Asteraceae	Heath aster	N	N	UPL	HP
<i>Aster praealtus</i>	Asteraceae	Veiny-lined aster	N	N/TU	FACW	HP
<i>Aster prenanthoides</i>	Asteraceae	Zig-zag aster	N	N	FAC	HP
<i>Aster puniceus</i> ssp. <i>puniceus</i>	Asteraceae	Purple-stemmed aster	N	N	OBL	HP
<i>Aster radula</i>	Asteraceae	Rough aster	N	N/PT	OBL	HP
<i>Aster umbellatus</i>	Asteraceae	Flat-topped white aster	N	N	FACW	HP
<i>Aster undulatus</i>	Asteraceae	Clasping heart-leaved aster	N	N	N	HP
<i>Athyrium filix-femina</i> var. <i>angustum</i>	Dryopteridaceae	Lady fern	N	N	FAC	HP

THE NESCOPECK CREEK WATERSHED ASSESSMENT

Scientific name	Family name	Common name	N/I	State	Wetlands	Growth
<i>Betula alleghaniensis</i>	Betulaceae	Yellow birch	N	N	FAC	TD
<i>Betula lenta</i>	Betulaceae	Black birch	N	N	FACU	TD
<i>Betula nigra</i>	Betulaceae	River birch	N	N	FACW	TD
<i>Betula populifolia</i>	Betulaceae	Gray birch	N	N	FAC	TD
<i>Bidens cernua</i>	Asteraceae	Bur-marigold	N	N	OBL	HA
<i>Bidens connata</i>	Asteraceae	Beggar-ticks	N	N	FACW+	HA
<i>Bidens frondosa</i>	Asteraceae	Beggar-ticks	N	N	FACW	HA
<i>Boehmeria cylindrica</i> var. <i>cylindrica</i>	Urticaceae	False nettle	N	N	FACW+	HP
<i>Botrychium dissectum</i>	Ophioglossaceae	Cut-leaved grape-fern	N	N	FAC	HP
<i>Botrychium virginianum</i>	Ophioglossaceae	Rattlesnake fern	N	N	FACU	HP
<i>Brachyelytrum erectum</i>	Poaceae	Brachyelytrum	N	N	N	HP
<i>Brasenia schreberi</i>	Cabombaceae	Purple wen-dock	N	N	OBL	HP
<i>Bromus ciliatus</i>	Poaceae	Fringed brome	N	N	FACW	HP
<i>Bromus commutatus</i>	Poaceae	Hairy chess	I	N	N	HA
<i>Bromus inermis</i>	Poaceae	Smooth brome	I	N	N	HP
<i>Bromus pubescens</i>	Poaceae	Canada brome	N	N	N	HP
<i>Calamagrostis canadensis</i> var. <i>canadensis</i>	Poaceae	Canada bluejoint	N	N	FACW+	HP
<i>Calamagrostis cinnoides</i>	Poaceae	Reedgrass	N	N	OBL	HP
<i>Calla palustris</i>	Araceae	Wild calla	N	N	OBL	HP
<i>Callitriche heterophylla</i>	Callitricaceae	Water-starwort	N	N	OBL	HP
<i>Caltha palustris</i> var. <i>palustris</i>	Ranunculaceae	Marsh-marigold	N	N	OBL	HP
<i>Campanula aparinoides</i>	Campanulaceae	Marsh bellflower	N	N	OBL	HP
<i>Campanula rapunculoides</i>	Campanulaceae	Creeping bellflower	I	N	N	HP
<i>Cardamine diphylla</i>	Brassicaceae	Two-leaved toothwort	N	N	FACU	HP
<i>Cardamine pensylvanica</i>	Brassicaceae	Pennsylvania bittercress	N	N	OBL	HP
<i>Carex annectens</i>	Cyperaceae	Sedge	N	N	FACW	HP
<i>Carex appalachica</i>	Cyperaceae	Sedge	N	N	N	HP
<i>Carex atlantica</i> ssp. <i>atlantica</i>	Cyperaceae	Bog sedge	N	N	FACW+	HP
<i>Carex atlantica</i> ssp. <i>capillacea</i>	Cyperaceae	Bog sedge	N	N	OBL	HP
<i>Carex blanda</i>	Cyperaceae	Sedge	N	N	FAC	HP
<i>Carex bromoides</i>	Cyperaceae	Sedge	N	N	FACW	HP
<i>Carex bushii</i>	Cyperaceae	Sedge	N	N	FACW	HP
<i>Carex canescens</i> var. <i>canescens</i>	Cyperaceae	Sedge	N	N	OBL	HP
<i>Carex cephalophora</i>	Cyperaceae	Sedge	N	N	FACU	HP
<i>Carex communis</i>	Cyperaceae	Sedge	N	N	N	HP
<i>Carex crinita</i> var. <i>crinita</i>	Cyperaceae	Short hair sedge	N	N	OBL	HP
<i>Carex debilis</i> var. <i>rudgei</i>	Cyperaceae	Sedge	N	N	FAC	HP
<i>Carex deweyana</i> var. <i>deweyana</i>	Cyperaceae	Sedge	N	N	FACU	HP
<i>Carex digitalis</i>	Cyperaceae	Sedge	N	N	UPL	HP
<i>Carex echinata</i>	Cyperaceae	Prickly sedge	N	N	OBL	HP
<i>Carex festucacea</i>	Cyperaceae	Sedge	N	N	FAC	HP
<i>Carex folliculata</i>	Cyperaceae	Sedge	N	N	OBL	HP
<i>Carex gracillima</i>	Cyperaceae	Sedge	N	N	FACU	HP
<i>Carex gynandra</i>	Cyperaceae	Sedge	N	N	OBL	HP
<i>Carex hirtifolia</i>	Cyperaceae	Sedge	N	N	N	HP
<i>Carex interior</i>	Cyperaceae	Sedge	N	N	OBL	HP
<i>Carex intumescens</i>	Cyperaceae	Sedge	N	N	FACW+	HP
<i>Carex laxiculmis</i> var. <i>laxiculmis</i>	Cyperaceae	Sedge	N	N	N	HP
<i>Carex laxiflora</i>	Cyperaceae	Sedge	N	N	FACU	HP
<i>Carex leptalea</i>	Cyperaceae	Sedge	N	N	OBL	HP
<i>Carex lupulina</i>	Cyperaceae	Sedge	N	N	OBL	HP
<i>Carex lurida</i>	Cyperaceae	Sedge	N	N	OBL	HP
<i>Carex pensylvanica</i>	Cyperaceae	Sedge	N	N	N	HP
<i>Carex polymorpha</i>	Cyperaceae	Variable sedge	N	PE/PT	FACU	HP
<i>Carex prasina</i>	Cyperaceae	Sedge	N	N	OBL	HP
<i>Carex projecta</i>	Cyperaceae	Sedge	N	N	FACW	HP
<i>Carex radiata</i>	Cyperaceae	Sedge	N	N	N	HP
<i>Carex rosea</i>	Cyperaceae	Sedge	N	N	N	HP
<i>Carex scabrata</i>	Cyperaceae	Sedge	N	N	OBL	HP
<i>Carex scoparia</i>	Cyperaceae	Broom sedge	N	N	FACW	HP
<i>Carex seorsa</i>	Cyperaceae	Sedge	N	N	FACW	HP
<i>Carex stipata</i> var. <i>stipata</i>	Cyperaceae	Sedge	N	N	NC	HP
<i>Carex stricta</i>	Cyperaceae	Tussock sedge	N	N	OBL	HP
<i>Carex swanii</i>	Cyperaceae	Sedge	N	N	FACU	HP
<i>Carex tribuloides</i>	Cyperaceae	Sedge	N	N	FACW+	HP
<i>Carex trisperma</i>	Cyperaceae	Sedge	N	N	OBL	HP
<i>Carex utriculata</i>	Cyperaceae	Sedge	N	N	N	HP
<i>Carex vesicaria</i>	Cyperaceae	Sedge	N	N	OBL	HP
<i>Carex vestita</i>	Cyperaceae	Sedge	N	N	N	HP
<i>Carex vulpinoidea</i> var. <i>vulpinoidea</i>	Cyperaceae	Sedge	N	N	OBL	HP
<i>Carpinus caroliniana</i>	Betulaceae	Hornbeam	N	N	FAC	TD

THE NESCOPECK CREEK WATERSHED ASSESSMENT

Scientific name	Family name	Common name	N/I	State	Wetlands	Growth
<i>Castanea dentata</i>	Fagaceae	American chestnut	N	N	N	TD
<i>Catalpa bignonioides</i>	Bignoniaceae	Catalpa	I	N	UPL	TD
<i>Caulophyllum thalictroides</i>	Berberidaceae	Blue cohosh	N	N	N	HP
<i>Ceanothus americanus</i>	Rhamnaceae	New Jersey tea	N	N	N	SD
<i>Celastrus scandens</i>	Celastraceae	American bittersweet	N	N	FACU-	VW
<i>Centaurea maculosa</i>	Asteraceae	Bushy knapweed	I	N	N	HB
<i>Cephalanthus occidentalis</i>	Rubiaceae	Buttonbush	N	N	OBL	SD
<i>Cerastium glomeratum</i>	Caryophyllaceae	Mouse-ear chickweed	I	N	UPL	HA
<i>Ceratophyllum muricatum</i>	Ceratophyllaceae	Hornwort	N	N	OBL	HP
<i>Chaenorrhinum minus</i>	Scrophulariaceae	Dwarf snapdragon	I	N	N	HA
<i>Chamaedaphne calyculata</i> var. <i>angustifolia</i>	Ericaceae	Leatherleaf	N	N	OBL	SE
<i>Chamaesyce maculata</i>	Euphorbiaceae	Spotted spurge	N	N	FACU-	HA
<i>Chelone glabra</i>	Scrophulariaceae	Turtlehead	N	N	OBL	HP
<i>Chenopodium album</i> var. <i>album</i>	Chenopodiaceae	Lamb's quarters	I	N	FACU+	HA
<i>Chimaphila maculata</i>	Pyrolaceae	Pipsissewa	N	N	N	HP
<i>Chrysanthemum leucanthemum</i>	Asteraceae	Ox-eye daisy	I	N	N	HP
<i>Chrysosplenium americanum</i>	Saxifragaceae	Golden saxifrage	N	N	OBL	HP
<i>Cichorium intybus</i>	Asteraceae	Blue chicory	I	N	N	HP
<i>Cicuta maculata</i> var. <i>maculata</i>	Apiaceae	Beaver-poison	N	N	OBL	HP
<i>Cimicifuga racemosa</i>	Ranunculaceae	Black snakeroot	N	N	N	HP
<i>Cinna arundinacea</i>	Poaceae	Wood reedgrass	N	N	FACW	HP
<i>Circaea alpina</i>	Onagraceae	Enchanter's-nightshade	N	N	FACW	HP
<i>Circaea lutetiana</i> ssp. <i>canadensis</i>	Onagraceae	Enchanter's-nightshade	N	N	FACU	HP
<i>Cirsium arvense</i> var. <i>arvense</i>	Asteraceae	Canada thistle	I	N	FACU	HP
<i>Cirsium pumilum</i>	Asteraceae	Pasture thistle	N	N	N	HB
<i>Cirsium vulgare</i>	Asteraceae	Bull-thistle	I	N	FACU-	HB
<i>Claytonia virginica</i>	Portulacaceae	Spring-beauty	N	N	FAC	HP
<i>Clematis virginiana</i>	Ranunculaceae	Virgin's-bower	N	N	FAC	VP
<i>Clinopodium vulgare</i>	Lamiaceae	Wild basil	I	N	N	HP
<i>Clintonia borealis</i>	Liliaceae	Blue bead-lily	N	N	FAC	HP
<i>Coincya monensis</i> var. <i>recurvata</i>	Brassicaceae	Coincya	I	N	N	HA/HP
<i>Comandra umbellata</i>	Santalaceae	Bastard toadflax	N	N	FACU-	HP
<i>Comptonia peregrina</i>	Myricaceae	Sweet-fern	N	N	N	SD
<i>Conyza canadensis</i> var. <i>canadensis</i>	Asteraceae	Horseweed	N	N	UPL	HA
<i>Coptis trifolia</i> ssp. <i>groenlandica</i>	Ranunculaceae	Goldthread	N	N	FACW	HP
<i>Cornus amomum</i> ssp. <i>amomum</i>	Cornaceae	Kinnikinnik	N	N	FACW	SD
<i>Cornus canadensis</i>	Cornaceae	Bunchberry	N	N	FAC-	HP
<i>Cornus florida</i>	Cornaceae	Flowering dogwood	N	N	FACU-	TD
<i>Cornus racemosa</i>	Cornaceae	Silky dogwood	N	N	FAC-	SD
<i>Cornus rugosa</i>	Cornaceae	Round-leaved dogwood	N	N	N	SD
<i>Coronilla varia</i>	Fabaceae	Crown-vetch	I	N	N	HP
<i>Corydalis sempervirens</i>	Fumariaceae	Rock harlequin	N	N	N	HB
<i>Corylus americana</i>	Betulaceae	American filbert	N	N	FACU-	SD
<i>Corylus cornuta</i>	Betulaceae	Beaked hazelnut	N	N	FACU-	SD
<i>Crataegus crus-galli</i>	Rosaceae	Cockspur hawthorn	N	N	FACU	SD/TD
<i>Crataegus flabellata</i>	Rosaceae	Fanleaf hawthorn	N	N	N	SD/TD
<i>Crataegus pruinosa</i>	Rosaceae	Frosted hawthorn	N	N	N	SD/TD
<i>Crataegus punctata</i>	Rosaceae	Dotted hawthorn	N	N	N	TD
<i>Cryptotaenia canadensis</i>	Apiaceae	Honewort	N	N	FAC	HP
<i>Cynoglossum virginianum</i>	Boraginaceae	Wild comfrey	N	N	N	HP
<i>Cyperus strigosus</i>	Cyperaceae	False nutsedge	N	N	FACW	HP
<i>Cypripedium acaule</i>	Orchidaceae	Pink lady's-slipper	N	N	FACU-	HP
<i>Cystopteris tenuis</i>	Dryopteridaceae	Fragile fern	N	N	FACU	HP
<i>Dactylis glomerata</i>	Poaceae	Orchardgrass	I	N	FACU	HP
<i>Dalibarda repens</i>	Rosaceae	Dewdrop	N	N	FAC	HP
<i>Danthonia compressa</i>	Poaceae	Northern oatgrass	N	N	FACU-	HP
<i>Daucus carota</i>	Apiaceae	Queen Anne's-lace	I	N	N	HB
<i>Dennstaedtia punctilobula</i>	Dennstaedtiaceae	Hay-scented fern	N	N	N	HP
<i>Deparia acrostichoides</i>	Dryopteridaceae	Silvery glade fern	N	N	FAC	HP
<i>Deschampsia flexuosa</i>	Poaceae	Common hairgrass	N	N	N	HP
<i>Desmodium canescens</i>	Fabaceae	Hoary tick-trefoil	N	N	N	HP
<i>Desmodium glutinosum</i>	Fabaceae	Sticky tick-clover	N	N	N	HP
<i>Desmodium nudiflorum</i>	Fabaceae	Naked-flowered tick-trefoil	N	N	N	HP
<i>Desmodium paniculatum</i>	Fabaceae	Tick-trefoil	N	N	UPL	HP
<i>Desmodium perplexum</i>	Fabaceae	Tick-trefoil	N	N	N	HP
<i>Desmodium rotundifolium</i>	Fabaceae	Round-leaved tick-trefoil	N	N	N	HP
<i>Dianthus armeria</i>	Caryophyllaceae	Deptford pink	I	N	N	HB
<i>Diervilla lonicera</i>	Caprifoliaceae	Bush-honeysuckle	N	N	N	SD
<i>Digitaria ciliaris</i>	Poaceae	Southern crabgrass	I	N	N	HA
<i>Digitaria ischaemum</i>	Poaceae	Smooth crabgrass	I	N	UPL	HA
<i>Digitaria sanguinalis</i>	Poaceae	Northern crabgrass	I	N	FACU-	HA

THE NESCOPECK CREEK WATERSHED ASSESSMENT

Scientific name	Family name	Common name	N/I	State	Wetlands	Growth
<i>Dryopteris cristata</i>	Dryopteridaceae	Crested shield fern	N	N	FACW+	HP
<i>Dryopteris marginalis</i>	Dryopteridaceae	Marginal wood fern	N	N	FACU-	HP
<i>Dulichium arundinaceum</i>	Cyperaceae	Three-way sedge	N	N	OBL	HP
<i>Echinochloa crusgalli</i> var. <i>crusgalli</i>	Poaceae	Barnyard-grass	I	N	FACU	HA
<i>Echinochloa muricata</i>	Poaceae	Barnyard-grass	N	N	FACW+	HA
<i>Elaeagnus umbellata</i>	Elaeagnaceae	Autumn-olive	I	N	N	SD
<i>Eleocharis acicularis</i>	Cyperaceae	Needle spike-rush	N	N	OBL	HP
<i>Eleocharis obtusa</i> var. <i>obtusa</i>	Cyperaceae	Wright's spike-rush	N	N	OBL	HA
<i>Eleocharis tenuis</i> var. <i>tenuis</i>	Cyperaceae	Spike-rush	N	N	FACW+	HP
<i>Elodea nuttallii</i>	Hydrocharitaceae	Waterweed	N	N	OBL	HP
<i>Elymus hystrix</i>	Poaceae	Bottlebrush-grass	N	N	N	HP
<i>Elymus virginicus</i>	Poaceae	Virginia wild-rye	N	N	FACW-	HP
<i>Elytrigia repens</i>	Poaceae	Quackgrass	I	N	FACU-	HP
<i>Epifagus virginiana</i>	Orobanchaceae	Beechdrops	N	N	N	HA
<i>Epigaea repens</i>	Ericaceae	Trailing-arbutus	N	N	N	SE
<i>Epilobium coloratum</i>	Onagraceae	Purple-leaved willow-herb	N	N	FACW+	HP
<i>Epilobium leptophyllum</i>	Onagraceae	Willow-herb	N	N	OBL	HP
<i>Equisetum arvense</i>	Equisetaceae	Field horsetail	N	N	FAC	HP
<i>Equisetum sylvaticum</i>	Equisetaceae	Woodland horsetail	N	N	FACW	HP
<i>Eragrostis capillaris</i>	Poaceae	Lacegrass	N	N	N	HA
<i>Erechtites hieracifolia</i>	Asteraceae	Fireweed	N	N	FACU	HA
<i>Erigeron philadelphicus</i>	Asteraceae	Daisy fleabane	N	N	FACU	HP
<i>Erigeron strigosus</i> var. <i>strigosus</i>	Asteraceae	Daisy fleabane	N	N	FACU+	HA/HB
<i>Erythronium americanum</i>	Liliaceae	Yellow trout-lily	N	N	N	HP
<i>Eupatorium fistulosum</i>	Asteraceae	Joe-pye-weed	N	N	FACW	HP
<i>Eupatorium maculatum</i>	Asteraceae	Spotted joe-pye-weed	N	N	N	HP
<i>Eupatorium perfoliatum</i>	Asteraceae	Boneset	N	N	FACW+	HP
<i>Eupatorium rugosum</i>	Asteraceae	White-snakeroot	N	N	N	HP
<i>Euthamia graminifolia</i> var. <i>graminifolia</i>	Asteraceae	Grass-leaved goldenrod	N	N	FAC	HP
<i>Fagus grandifolia</i>	Fagaceae	American beech	N	N	FACU	TD
<i>Festuca elatior</i>	Poaceae	Fescue	I	N	FACU-	HP
<i>Festuca obtusa</i>	Poaceae	Nodding fescue	N	N	FACU	HP
<i>Fragaria virginiana</i> ssp. <i>virginiana</i>	Rosaceae	Wild strawberry	N	N	FACU	HP
<i>Fraxinus americana</i> var. <i>americana</i>	Oleaceae	White ash	N	N	FACU	TD
<i>Fraxinus nigra</i>	Oleaceae	Black ash	N	N	FACW	TD
<i>Galinsoga quadriradiata</i>	Asteraceae	Quickweed	I	N	N	HA
<i>Galium circaeazans</i> var. <i>circaeazans</i>	Rubiaceae	Wild licorice	N	N	UPL	HP
<i>Galium mollugo</i>	Rubiaceae	White bedstraw	I	N	N	HP
<i>Galium tinctorium</i>	Rubiaceae	Bedstraw	N	N	OBL	HP
<i>Galium triflorum</i>	Rubiaceae	Sweet-scented bedstraw	N	N	FACU	HP
<i>Gaultheria procumbens</i>	Ericaceae	Teaberry	N	N	FACU	SE
<i>Gaylussacia baccata</i>	Ericaceae	Black huckleberry	N	N	FACU	SD
<i>Gentiana clausa</i>	Gentianaceae	Meadow closed gentian	N	N	FACW	HP
<i>Gentianella quinquefolia</i>	Gentianaceae	Stiff gentian	N	N	FAC	HA/HB
<i>Geranium maculatum</i>	Geraniaceae	Wood geranium	N	N	FACU	HP
<i>Geum canadense</i> var. <i>canadense</i>	Rosaceae	White avens	N	N	FACU	HP
<i>Geum virginianum</i>	Rosaceae	Cream-colored avens	N	N	FAC-	HP
<i>Glechoma hederacea</i>	Lamiaceae	Gill-over-the-ground	I	N	FACU	HP
<i>Glyceria canadensis</i>	Poaceae	Rattlesnake mannagrass	N	N	OBL	HP
<i>Glyceria melicaria</i>	Poaceae	Slender mannagrass	N	N	OBL	HP
<i>Glyceria striata</i>	Poaceae	Fowl mannagrass	N	N	OBL	HP
<i>Goodyera pubescens</i>	Orchidaceae	Downy rattlesnake-plantain	N	N	FACU-	HP
<i>Gratiola neglecta</i>	Scrophulariaceae	Hedge hyssop	N	N	OBL	HA
<i>Hamamelis virginiana</i>	Hamamelidaceae	Witch-hazel	N	N	FACU+	SD
<i>Hedeoma pulegioides</i>	Lamiaceae	American pennyroyal	N	N	N	HA
<i>Helenium autumnale</i>	Asteraceae	Common sneezeweed	N	N	FACW+	HP
<i>Helianthemum canadense</i>	Cistaceae	Frostweed	N	N	N	HP
<i>Helianthus decapetalus</i>	Asteraceae	Thin-leaved sunflower	N	N	FACU	HP
<i>Helianthus divaricatus</i>	Asteraceae	Rough sunflower	N	N	N	HP
<i>Helianthus strumosus</i>	Asteraceae	Rough-leaved sunflower	N	N	N	HP
<i>Helianthus tuberosus</i>	Asteraceae	Jerusalem artichoke	I	N	FAC	HP
<i>Hemerocallis fulva</i>	Liliaceae	Orange day-lily	I	N	UPL	HP
<i>Hepatica nobilis</i> var. <i>obtusa</i>	Ranunculaceae	Liverleaf	N	N	N	HP
<i>Hieracium caespitosum</i>	Asteraceae	King-devil	I	N	N	HP
<i>Hieracium paniculatum</i>	Asteraceae	Hawkweed	N	N	N	HP
<i>Hieracium pilosella</i>	Asteraceae	Mouse-ear hawkweed	I	N	N	HP
<i>Hieracium piloselloides</i>	Asteraceae	King-devil	I	N	N	HP
<i>Hieracium sabaudum</i>	Asteraceae	Hawkweed	I	N	N	HP
<i>Hieracium scabrum</i>	Asteraceae	Hawkweed	N	N	N	HP
<i>Hieracium venosum</i>	Asteraceae	Rattlesnake-weed	N	N	N	HP
<i>Holcus lanatus</i>	Poaceae	Velvetgrass	I	N	FACU	HP

THE NESCOPECK CREEK WATERSHED ASSESSMENT

Scientific name	Family name	Common name	N/I	State	Wetlands	Growth
<i>Hydrocotyle americana</i>	Apiaceae	Marsh pennywort	N	N	OBL	HP
<i>Hypericum canadense</i>	Clusiaceae	Canadian St. John's-wort	N	N	FACW	HA
<i>Hypericum ellipticum</i>	Clusiaceae	Pale St. John's-wort	N	N	OBL	HP
<i>Hypericum mutilum</i>	Clusiaceae	Dwarf St. John's-wort	N	N	FACW	HP
<i>Hypericum perforatum</i>	Clusiaceae	St. John's-wort	I	N	N	HP
<i>Hypoxis hirsuta</i>	Liliaceae	Yellow star-grass	N	N	FAC	HP
<i>Ilex montana</i>	Aquifoliaceae	Mountain holly	N	N	N	SD
<i>Ilex verticillata</i>	Aquifoliaceae	Winterberry	N	N	FACW+	SD
<i>Impatiens capensis</i>	Balsaminaceae	Jewelweed	N	N	FACW	HA
<i>Iris versicolor</i>	Iridaceae	Northern blue flag	N	N	OBL	HP
<i>Isoetes riparia</i>	Isoetaceae	Shore quillwort	N	N	OBL	HP
<i>Juncus brevicaudatus</i>	Juncaceae	Narrow-panicked rush	N	N	OBL	HP
<i>Juncus canadensis</i>	Juncaceae	Canada rush	N	N	OBL	HP
<i>Juncus effusus</i> var. <i>solutus</i>	Juncaceae	Soft rush	N	N	OBL	HP
<i>Juncus marginatus</i> var. <i>marginatus</i>	Juncaceae	Grass-leaved rush	N	N	FACW	HP
<i>Juncus tenuis</i> var. <i>tenuis</i>	Juncaceae	Path rush	N	N	FAC-	HP
<i>Kalmia angustifolia</i>	Ericaceae	Sheep laurel	N	N	FAC	SE
<i>Kalmia latifolia</i>	Ericaceae	Mountain laurel	N	N	FACU	SE
<i>Kochia scoparia</i>	Chenopodiaceae	Belvedere	I	N	UPL	HA
<i>Lactuca biennis</i>	Asteraceae	Blue lettuce	N	N	FACU	HA/HB
<i>Lactuca canadensis</i> var. <i>canadensis</i>	Asteraceae	Wild lettuce	N	N	FACU-	HA/HB
<i>Laportea canadensis</i>	Urticaceae	Wood-nettle	N	N	FAC	HP
<i>Lechea pulchella</i>	Cistaceae	Pinweed	N	N	N	HP
<i>Lechea racemulosa</i>	Cistaceae	Pinweed	N	N	N	HP
<i>Lechea villosa</i>	Cistaceae	Pinweed	N	N	N	HP
<i>Leersia oryzoides</i>	Poaceae	Rice cutgrass	N	N	OBL	HP
<i>Leersia virginica</i>	Poaceae	Cutgrass	N	N	FACW	HP
<i>Lemna minor</i>	Lemnaceae	Duckweed	N	N	OBL	HP
<i>Lepidium campestre</i>	Brassicaceae	Fieldcress	I	N	N	HA/HB
<i>Lepidium virginicum</i>	Brassicaceae	Poor-man's-pepper	N	N	FACU-	HA/HB
<i>Lespedeza intermedia</i>	Fabaceae	Bush-clover	N	N	N	HP
<i>Lilium superbum</i>	Liliaceae	Turk's-cap lily	N	N	FACW+	HP
<i>Linaria vulgaris</i>	Scrophulariaceae	Butter-and-eggs	I	N	N	HP
<i>Lindera benzoin</i>	Lauraceae	Spicebush	N	N	FACW-	SD
<i>Linum medium</i> var. <i>medium</i>	Linaceae	Yellow flax	N	N	FACU	HP
<i>Linum virginianum</i>	Linaceae	Slender yellow flax	N	N	FACU	HP
<i>Liriodendron tulipifera</i>	Magnoliaceae	Tuliptree	N	N	FACU	TD
<i>Lobelia cardinalis</i>	Campanulaceae	Cardinal-flower	N	N	FACW+	HP
<i>Lobelia inflata</i>	Campanulaceae	Indian-tobacco	N	N	FACU	HA
<i>Lobelia spicata</i> var. <i>spicata</i>	Campanulaceae	Spiked lobelia	N	N	FAC-	HP
<i>Lolium perenne</i>	Poaceae	Perennial ryegrass	I	N	FACU-	HP
<i>Lonicera canadensis</i>	Caprifoliaceae	Fly honeysuckle	N	N	FACU	SD
<i>Lonicera dioica</i> var. <i>dioica</i>	Caprifoliaceae	Mountain honeysuckle	N	N	FACU	SD
<i>Lonicera hirsuta</i>	Caprifoliaceae	Hairy honeysuckle	N	TU/PE	FAC	SD
<i>Lonicera morrowii</i>	Caprifoliaceae	Morrow's honeysuckle	I	N	N	SD
<i>Lotus corniculatus</i>	Fabaceae	Bird's-foot trefoil	I	N	FACU-	HP
<i>Ludwigia palustris</i>	Onagraceae	Marsh-purslane	N	N	OBL	HP
<i>Lupinus perennis</i>	Fabaceae	Blue lupine	N	PR	N	HP
<i>Luzula multiflora</i>	Juncaceae	Field woodrush	N	N	FACU	HP
<i>Lycopodiella inundata</i>	Lycopodiaceae	Northern bog clubmoss	N	N	OBL	HP
<i>Lycopodium annotinum</i>	Lycopodiaceae	Bristly clubmoss	N	N	FAC	HP
<i>Lycopodium clavatum</i> var. <i>clavatum</i>	Lycopodiaceae	Common clubmoss	N	N	FAC	HP
<i>Lycopodium hickeyi</i>	Lycopodiaceae	Hickey's ground-pine	N	N	FACU	HP
<i>Lycopodium obscurum</i>	Lycopodiaceae	Flat-branched ground-pine	N	N	FACU	HP
<i>Lycopus uniflorus</i>	Lamiaceae	Bugleweed	N	N	OBL	HP
<i>Lycopus virginicus</i>	Lamiaceae	Bugleweed	N	N	OBL	HP
<i>Lygodium palmatum</i>	Lygodiaceae	Climbing fern	N	PR	FACW	VP
<i>Lyonia ligustrina</i>	Ericaceae	Maleberry	N	N	FACW	SD
<i>Lysimachia ciliata</i>	Primulaceae	Fringed loosestrife	N	N	FACW	HP
<i>Lysimachia quadrifolia</i>	Primulaceae	Whorled loosestrife	N	N	FACU-	HP
<i>Lysimachia terrestris</i>	Primulaceae	Swamp-candles	N	N	OBL	HP
<i>Lythrum salicaria</i>	Lythraceae	Purple loosestrife	I	N	FACW+	HP
<i>Maianthemum canadense</i>	Liliaceae	Canada mayflower	N	N	FAC-	HP
<i>Malus pumila</i>	Rosaceae	Apple	I	N	N	TD
<i>Malva moschata</i>	Malvaceae	Musk mallow	I	N	UPL	HP
<i>Matricaria matricarioides</i>	Asteraceae	Pineapple-weed	I	N	FACU	HA
<i>Medeola virginiana</i>	Liliaceae	Indian cucumber-root	N	N	N	HP
<i>Melampyrum lineare</i> var. <i>americanum</i>	Scrophulariaceae	Cow-wheat	I	N	FACU	HA
<i>Melampyrum lineare</i> var. <i>pectinatum</i>	Scrophulariaceae	Cow-wheat	N	N	FACU	HA
<i>Melanthium latifolium</i>	Liliaceae	Bunchflower	N	N	FACU	HP
<i>Melilotus alba</i>	Fabaceae	White sweet-clover	I	N	FACU	HB

THE NESCOPECK CREEK WATERSHED ASSESSMENT

Scientific name	Family name	Common name	N/I	State	Wetlands	Growth
<i>Mitchella repens</i>	Rubiaceae	Partridge-berry	N	N	FACU	HP
<i>Mitella diphylla</i>	Saxifragaceae	Bishop's-cap	N	N	FACU	HP
<i>Monarda fistulosa</i> var. <i>fistulosa</i>	Lamiaceae	Horsemint	N	N	UPL	HP
<i>Monotropa uniflora</i>	Monotropaceae	Indian-pipe	N	N	FACU-	HP
<i>Muhlenbergia frondosa</i>	Poaceae	Wirestem muhly	N	N	FAC	HP
<i>Muhlenbergia glomerata</i>	Poaceae	Spike muhly	N	N	FACW	HP
<i>Muhlenbergia schreberi</i>	Poaceae	Dropseed	N	N	FAC	HP
<i>Muhlenbergia sylvatica</i>	Poaceae	Muhly	N	N	FAC+	HP
<i>Muhlenbergia tenuiflora</i>	Poaceae	Muhly	N	N	N	HP
<i>Myriophyllum humile</i>	Haloragaceae	Water-milfoil	N	N	OBL	HP
<i>Najas flexilis</i>	Najadaceae	Northern waterm nymph	N	N	OBL	HA
<i>Najas gracillima</i>	Najadaceae	Slender waterm nymph	N	PT	OBL	HA
<i>Nemopanthus mucronatus</i>	Aquifoliaceae	Mountain holly	N	N	OBL	SD
<i>Nuphar lutea</i>	Nymphaeaceae	Spatterdock	N	N	OBL	HP
<i>Nyssa sylvatica</i>	Nyssaceae	Sourgum	N	N	FAC	TD
<i>Oenothera biennis</i>	Onagraceae	Evening-primrose	N	N	FACU-	HB/HP
<i>Oenothera fruticosa</i> ssp. <i>fruticosa</i>	Onagraceae	Sundrops	N	N	FAC	HP
<i>Oenothera perennis</i>	Onagraceae	Sundrops	N	N	FAC-	HP
<i>Onoclea sensibilis</i>	Dryopteridaceae	Sensitive fern	N	N	FACW	HP
<i>Oryzopsis asperifolia</i>	Poaceae	Spreading ricegrass	N	N	N	HP
<i>Oryzopsis racemosa</i>	Poaceae	Ricegrass	N	N	N	HP
<i>Osmorhiza claytonii</i>	Apiaceae	Sweet-cicely	N	N	FACU-	HP
<i>Osmunda cinnamomea</i>	Osmundaceae	Cinnamon fern	N	N	FACW	HP
<i>Osmunda claytoniana</i>	Osmundaceae	Interrupted fern	N	N	FAC	HP
<i>Osmunda regalis</i> var. <i>spectabilis</i>	Osmundaceae	Royal fern	N	N	OBL	HP
<i>Ostrya virginiana</i>	Betulaceae	Hop-hornbeam	N	N	FACU-	TD
<i>Oxalis acetosella</i>	Oxalidaceae	Northern wood-sorrel	N	N	FAC-	HP
<i>Oxalis stricta</i>	Oxalidaceae	Common yellow wood-sorrel	N	N	UPL	HP
<i>Panax trifolius</i>	Araliaceae	Dwarf ginseng	N	N	N	HP
<i>Panicum acuminatum</i>	Poaceae	Panic grass	N	N	FAC	HP
<i>Panicum capillare</i>	Poaceae	Witchgrass	N	N	FAC-	HA
<i>Panicum clandestinum</i>	Poaceae	Deer-tongue grass	N	N	FAC+	HP
<i>Panicum commutatum</i>	Poaceae	Panic grass	N	N	FACU+	HP
<i>Panicum depauperatum</i>	Poaceae	Poverty panic grass	N	N	N	HP
<i>Panicum dichotomiflorum</i>	Poaceae	Smooth panic grass	N	N	FACW-	HA
<i>Panicum dichotomum</i>	Poaceae	Panic grass	N	N	FAC	HP
<i>Panicum latifolium</i>	Poaceae	Panic grass	N	N	FACU-	HP
<i>Panicum microcarpon</i>	Poaceae	Panic grass	N	N	FACU	HP
<i>Panicum virgatum</i>	Poaceae	Switchgrass	N	N	FAC	HP
<i>Parthenocissus quinquefolia</i>	Vitaceae	Virginia-creeper	N	N	FACU	VW
<i>Pedicularis canadensis</i>	Scrophulariaceae	Forest lousewort	N	N	FACU	HP
<i>Phalaris arundinacea</i>	Poaceae	Reed canary-grass	N	N	FACW	HP
<i>Phegopteris connectilis</i>	Thelypteridaceae	Long beech fern	N	N	FACU*	HP
<i>Phegopteris hexagonoptera</i>	Thelypteridaceae	Broad beech fern	N	N	FAC	HP
<i>Phleum pratense</i>	Poaceae	Timothy	I	N	FACU	HP
<i>Phragmites australis</i>	Poaceae	Common reed	N	N	FACW	HP
<i>Physocarpus opulifolius</i>	Rosaceae	Ninebark	N	N	FACW-	SD
<i>Phytolacca americana</i>	Phytolaccaceae	Pokeweed	N	N	FACU+	HP
<i>Picea abies</i>	Pinaceae	Norway spruce	I	N	N	TE
<i>Picea glauca</i>	Pinaceae	White spruce	I	N	FACU	TE
<i>Picea pungens</i>	Pinaceae	Colorado blue spruce	I	N	N	TE
<i>Pilea pumila</i>	Urticaceae	Clearweed	N	N	FACW	HA
<i>Pinus resinosa</i>	Pinaceae	Norway pine	N	N	FACU	TE
<i>Pinus rigida</i>	Pinaceae	Pitch pine	N	N	FACU	TE
<i>Pinus strobus</i>	Pinaceae	Eastern white pine	N	N	FACU	TE
<i>Pinus sylvestris</i>	Pinaceae	Scots pine	I	N	N	TE
<i>Plantago lanceolata</i>	Plantaginaceae	English plantain	I	N	UPL	HP/HA
<i>Plantago major</i>	Plantaginaceae	Broad-leaved plantain	I	N	FACU	HP
<i>Plantago rugelii</i>	Plantaginaceae	Rugel's plantain	N	N	FACU	HP
<i>Platanthera clavellata</i>	Orchidaceae	Clubspur orchid	N	N	FACW+	HP
<i>Platanthera grandiflora</i>	Orchidaceae	Large purple fringed-orchid	N	N	FACW	HP
<i>Platanthera lacera</i>	Orchidaceae	Ragged fringed-orchid	N	N	FACW	HP
<i>Platanthera orbiculata</i> var. <i>orbiculata</i>	Orchidaceae	Large round-leaved orchid	N	N	FAC	HP
<i>Platanus occidentalis</i>	Platanaceae	Sycamore	N	N	FACW-	TD
<i>Poa alsodes</i>	Poaceae	Woodland bluegrass	N	N	FACW-	HP
<i>Poa compressa</i>	Poaceae	Canada bluegrass	I	N	FACU	HP
<i>Poa nemoralis</i>	Poaceae	Wood bluegrass	I	N	FAC	HP
<i>Poa pratensis</i>	Poaceae	Kentucky bluegrass	I	N	FACU	HP
<i>Podophyllum peltatum</i>	Berberidaceae	Mayapple	N	N	N	HP
<i>Polygala paucifolia</i>	Polygalaceae	Bird-on-the-wing	N	N	FACU	HP
<i>Polygala verticillata</i> var. <i>verticillata</i>	Polygalaceae	Whorled milkwort	N	N	UPL	HA

THE NESCOPECK CREEK WATERSHED ASSESSMENT

Scientific name	Family name	Common name	N/I	State	Wetlands	Growth
<i>Polygonum caespitosum</i> var. <i>caespitosum</i>	Polygonaceae	Low smartweed	I	N	FACU-	HA
<i>Polygonum pennsylvanicum</i>	Polygonaceae	Smartweed	N	N	FACW	HA
<i>Polygonum persicaria</i>	Polygonaceae	Lady's-thumb	I	N	FACW	HA
<i>Polygonum punctatum</i> var. <i>punctatum</i>	Polygonaceae	Dotted smartweed	N	N	OBL	HP/HA
<i>Polygonum sagittatum</i>	Polygonaceae	Tearthumb	N	N	OBL	HA
<i>Polygonum scandens</i> var. <i>scandens</i>	Polygonaceae	Climbing flase buckwheat	N	N	FAC	HP
<i>Polygonum virginianum</i>	Polygonaceae	Jumpseed	N	N	FAC	HP
<i>Polypodium virginianum</i>	Polypodiaceae	Common polypody	N	N	N	HP
<i>Polystichum acrostichoides</i>	Dryopteridaceae	Christmas fern	N	N	NC	HP
<i>Populus grandidentata</i>	Salicaceae	Bigtooth aspen	N	N	FACU-	TD
<i>Populus tremuloides</i>	Salicaceae	Quaking aspen	N	N	N	TD
<i>Portulaca oleracea</i>	Portulacaceae	Purslane	N	N	FAC	HA
<i>Potamogeton diversifolius</i>	Potamogetonaceae	Snailseed pondweed	N	N	OBL	HP
<i>Potamogeton epihydrus</i>	Potamogetonaceae	Ribbonleaf pondweed	N	N	OBL	HP
<i>Potamogeton foliosus</i>	Potamogetonaceae	Leafy pondweed	N	N	OBL	HP
<i>Potamogeton natans</i>	Potamogetonaceae	Floating pondweed	N	N	OBL	HP
<i>Potamogeton nodosus</i>	Potamogetonaceae	Longleaf pondweed	N	N	OBL	HP
<i>Potentilla argentea</i>	Rosaceae	Hoary cinquefoil	I	N	UPL	HP
<i>Potentilla norvegica</i> ssp. <i>monspeliensis</i>	Rosaceae	Strawberry-weed	N	N	FACU	HA/HB
<i>Potentilla recta</i>	Rosaceae	Sulfur cinquefoil	I	N	N	HP
<i>Potentilla simplex</i>	Rosaceae	Old-field cinquefoil	N	N	FACU-	HP
<i>Prenanthes altissima</i>	Asteraceae	Rattlesnake-root	N	N	FACU-	HP
<i>Prenanthes trifoliolata</i>	Asteraceae	Gall-of-the-earth	N	N	N	HP
<i>Prunella vulgaris</i> ssp. <i>vulgaris</i>	Lamiaceae	Heal-all	I	N	FACU+	HP
<i>Prunus pennsylvanica</i>	Rosaceae	Pin cherry	N	N	FACU-	TD
<i>Prunus serotina</i>	Rosaceae	Wild black cherry	N	N	FACU	TD
<i>Prunus virginiana</i>	Rosaceae	Choke cherry	N	N	FACU	SD/TD
<i>Pteridium aquilinum</i> var. <i>latiusculum</i>	Dennstaedtiaceae	Northern bracken fern	N	N	FACU	HP
<i>Pycnanthemum muticum</i>	Lamiaceae	Mountain-mint	N	N	FACW	HP
<i>Pyrola elliptica</i>	Pyrolaceae	Shinleaf	N	N	UPL	HP
<i>Quercus alba</i>	Fagaceae	White oak	N	N	FACU	TD
<i>Quercus bicolor</i>	Fagaceae	Swamp white oak	N	N	FACW+	TD
<i>Quercus coccinea</i>	Fagaceae	Scarlet oak	N	N	N	TD
<i>Quercus ilicifolia</i>	Fagaceae	Scrub oak	N	N	N	SD
<i>Quercus montana</i>	Fagaceae	Chestnut oak	N	N	FACW	TD
<i>Quercus palustris</i>	Fagaceae	Pin oak	N	N	FACW	TD
<i>Quercus prinoides</i>	Fagaceae	Dwarf chestnut oak	N	N	N	SD
<i>Quercus rubra</i>	Fagaceae	Northern red oak	N	N	FACU-	TD
<i>Quercus velutina</i>	Fagaceae	Black oak	N	N	N	TD
<i>Ranunculus abortivus</i> var. <i>abortivus</i>	Ranunculaceae	Small-flowered crowfoot	N	N	FACW-	HA
<i>Ranunculus acris</i>	Ranunculaceae	Common meadow buttercup	I	N	FAC+	HP
<i>Ranunculus caricetorum</i>	Ranunculaceae	Marsh buttercup	N	N	FAC	HP
<i>Ranunculus recurvatus</i>	Ranunculaceae	Hooked crowfoot	N	N	FAC+	HP
<i>Rhamnus alnifolia</i>	Rhamnaceae	Alder-leaved buckthorn	N	TU/N	OBL	SD
<i>Rhamnus frangula</i>	Rhamnaceae	Alder buckthorn	I	N	NA	SD
<i>Rhododendron maximum</i>	Ericaceae	Rosebay	N	N	FAC	SE
<i>Rhododendron periclymenoides</i>	Ericaceae	Pinxter-flower	N	N	FAC	SD
<i>Rhododendron prinophyllum</i>	Ericaceae	Mountain azalea	N	N	FAC	SD
<i>Rhododendron viscosum</i>	Ericaceae	Swamp azalea	N	N	FACW+	SD
<i>Rhus typhina</i>	Anacardiaceae	Staghorn sumac	N	N	N	SD
<i>Rhynchospora capitellata</i>	Cyperaceae	Beak-rush	N	N	OBL	HP
<i>Ribes rotundifolium</i>	Grossulariaceae	Wild gooseberry	N	N	N	SD
<i>Robinia pseudoacacia</i>	Fabaceae	Black locust	N	N	FACU-	TD
<i>Rosa carolina</i>	Rosaceae	Pasture rose	N	N	UPL	SD
<i>Rosa multiflora</i>	Rosaceae	Multiflora rose	I	N	FACU	SD
<i>Rosa virginiana</i>	Rosaceae	Wild rose	N	TU	FAC	SD
<i>Rubus allegheniensis</i>	Rosaceae	Common blackberry	N	N	FACU-	SD
<i>Rubus enslenii</i>	Rosaceae	Southern dewberry	N	N	FACU	VW
<i>Rubus flagellaris</i>	Rosaceae	Prickly dewberry	N	N	FACU	VW
<i>Rubus hispidus</i>	Rosaceae	Swamp dewberry	N	N	FACW	VW
<i>Rubus idaeus</i> var. <i>strigosus</i>	Rosaceae	Red raspberry	N	N	FAC-	SD
<i>Rubus occidentalis</i>	Rosaceae	Black-cap	N	N	N	SD
<i>Rubus odoratus</i>	Rosaceae	Purple-flowering raspberry	N	N	N	SD
<i>Rubus pensilvanicus</i>	Rosaceae	Blackberry	N	N	N	SD
<i>Rubus pubescens</i>	Rosaceae	Dwarf blackberry	N	N	FACW	SD
<i>Rudbeckia laciniata</i>	Asteraceae	Cutleaf coneflower	N	N	FACW	HP
<i>Rumex acetosella</i>	Polygonaceae	Sheep sorrel	I	N	UPL	HP
<i>Rumex crispus</i>	Polygonaceae	Curly dock	I	N	FACU	HP
<i>Rumex obtusifolius</i>	Polygonaceae	Bitter dock	I	N	FACU-	HP
<i>Sagittaria latifolia</i> var. <i>latifolia</i>	Alismataceae	Wapato	N	N	OBL	HP
<i>Salix discolor</i>	Salicaceae	Pussy willow	N	N	FACW	SD

THE NESCOPECK CREEK WATERSHED ASSESSMENT

Scientific name	Family name	Common name	N/I	State	Wetlands	Growth
<i>Salix lucida</i> ssp. <i>lucida</i>	Salicaceae	Shining willow	N	N	FACW	SD
<i>Salix nigra</i>	Salicaceae	Black willow	N	N	FACW+	TD
<i>Salix sericea</i>	Salicaceae	Silky willow	N	N	OBL	SD
<i>Sambucus canadensis</i>	Caprifoliaceae	American elder	N	N	FACW	SD
<i>Sambucus racemosa</i> var. <i>pubens</i>	Caprifoliaceae	Red-berried elder	N	N	FACU	SD
<i>Sanguisorba canadensis</i>	Rosaceae	American burnet	N	N	FACW+	HP
<i>Saponaria officinalis</i>	Caryophyllaceae	Bouncing-bet	I	N	FACU-	HP
<i>Sassafras albidum</i>	Lauraceae	Sassafras	N	N	FACU-	TD
<i>Saxifraga pensylvanica</i>	Saxifragaceae	Swamp saxifrage	N	N	OBL	HP
<i>Schizachyrium scoparium</i> var. <i>scoparium</i>	Poaceae	Little bluestem	N	N	FACU	HP
<i>Schoenoplectus tabernaemontani</i>	Cyperaceae	Great bulrush	N	N	OBL	HP
<i>Scirpus cyperinus</i>	Cyperaceae	Wool-grass	N	N	FACW+	HP
<i>Scirpus georgianus</i>	Cyperaceae	Bulrush	N	N	OBL	HP
<i>Scirpus polyphyllus</i>	Cyperaceae	Bulrush	N	N	OBL	HP
<i>Scutellaria lateriflora</i>	Lamiaceae	Mad-dog skullcap	N	N	FACW+	HP
<i>Setaria faberi</i>	Poaceae	Giant foxtail	I	N	UPL	HA
<i>Setaria pumila</i>	Poaceae	Yellow foxtail	I	N	FAC	HA
<i>Silene latifolia</i>	Caryophyllaceae	White campion	I	N	N	HA/HP
<i>Silene stellata</i>	Caryophyllaceae	Starry campion	N	N	N	HP
<i>Silene vulgaris</i>	Caryophyllaceae	Bladder campion	I	N	N	HP
<i>Sisymbrium officinale</i> var. <i>officinale</i>	Brassicaceae	Hedge-mustard	I	N	N	HA
<i>Sisyrinchium angustifolium</i>	Iridaceae	Blue-eyed-grass	N	N	FACW-	HP
<i>Sisyrinchium montanum</i> var. <i>crebrum</i>	Iridaceae	Blue-eyed-grass	N	N	FAC	HP
<i>Sisyrinchium mucronatum</i>	Iridaceae	Blue-eyed-grass	N	N	FAC+	HP
<i>Sium suave</i>	Apiaceae	Water-parsnip	N	N	OBL	HP
<i>Smilacina racemosa</i>	Liliaceae	False solomon's-seal	N	N	N	HP
<i>Smilax glauca</i>	Smilacaceae	Catbrier	N	N	FACU	VW
<i>Smilax herbacea</i>	Smilacaceae	Carrion-flower	N	N	FAC	VP
<i>Smilax hispida</i>	Smilacaceae	Bristly greenbrier	N	N	N	VW
<i>Smilax rotundifolia</i>	Smilacaceae	Catbrier	N	N	FAC	VW
<i>Solanum dulcamara</i> var. <i>dulcamara</i>	Solanaceae	Trailing nightshade	I	N	FACU	VH/HP
<i>Solidago altissima</i>	Asteraceae	Late goldenrod	N	N	FACU	HP
<i>Solidago arguta</i> var. <i>arguta</i>	Asteraceae	Forest goldenrod	N	N	N	HP
<i>Solidago bicolor</i>	Asteraceae	Silver-rod	N	N	N	HP
<i>Solidago caesia</i> var. <i>caesia</i>	Asteraceae	Bluestem goldenrod	N	N	FACU	HP
<i>Solidago canadensis</i> var. <i>canadensis</i>	Asteraceae	Canada goldenrod	N	N	FACU	HP
<i>Solidago flexicaulis</i>	Asteraceae	Zigzag goldenrod	N	N	FACU	HP
<i>Solidago gigantea</i> var. <i>gigantea</i>	Asteraceae	Smooth goldenrod	N	N	FACW	HP
<i>Solidago juncea</i>	Asteraceae	Early goldenrod	N	N	N	HP
<i>Solidago nemoralis</i>	Asteraceae	Gray goldenrod	N	N	N	HP
<i>Solidago odora</i>	Asteraceae	Sweet goldenrod	N	N	N	HP
<i>Solidago puberula</i>	Asteraceae	Downy goldenrod	N	N	FACU-	HP
<i>Solidago rugosa</i> var. <i>rugosa</i>	Asteraceae	Wrinkle-leaf goldenrod	N	N	FAC	HP
<i>Sonchus asper</i>	Asteraceae	Spiny-leaved sow-thistle	I	N	FAC	HA
<i>Sonchus oleraceus</i>	Asteraceae	Common sow-thistle	I	N	UPL	HA
<i>Sparganium americanum</i>	Sparganiaceae	Bur-reed	N	N	OBL	HP
<i>Sparganium chlorocarpum</i>	Sparganiaceae	Bur-reed	N	N	OBL	HP
<i>Spiraea alba</i>	Rosaceae	Meadow-sweet	N	N	FACW+	SD
<i>Spiraea latifolia</i>	Rosaceae	Meadow-sweet	N	N	FAC+	SD
<i>Spiraea tomentosa</i>	Rosaceae	Hardhack	N	N	FACW-	SD
<i>Spiranthes lacera</i> var. <i>gracilis</i>	Orchidaceae	Southern slender ladies'-tresses	N	N	FACU-	HP
<i>Spirodela polyrhiza</i>	Lemnaceae	Greater duckweed	N	N	OBL	HP
<i>Sporobolus vaginiflorus</i>	Poaceae	Poverty grass	N	N	UPL	HA
<i>Stellaria longifolia</i>	Caryophyllaceae	Long-leaved stitchwort	N	N	FACW	HP
<i>Streptopus roseus</i> var. <i>roseus</i>	Liliaceae	Rose mandaria	N	N	FAC-	HP
<i>Symplocarpus foetidus</i>	Araceae	Skunk cabbage	N	N	OBL	HP
<i>Tanacetum vulgare</i>	Asteraceae	Common tansy	I	N	N	HP
<i>Taraxacum officinale</i>	Asteraceae	Common dandelion	I	N	FACU-	HP
<i>Thalictrum pubescens</i>	Ranunculaceae	Tall meadow-rue	N	N	FACW+	HP
<i>Thelypteris noveboracensis</i>	Thelypteridaceae	New York fern	N	N	FAC	HP
<i>Thelypteris palustris</i> var. <i>pubescens</i>	Thelypteridaceae	Marsh fern	N	N	FACW+	HP
<i>Thlaspi arvense</i>	Brassicaceae	Field pennycress	I	N	N	HA
<i>Thlaspi perfoliatum</i>	Brassicaceae	Pennycress	I	N	N	HA
<i>Tiarella cordifolia</i>	Saxifragaceae	Foamflower	N	N	FAC-	HP
<i>Tilia americana</i> var. <i>americana</i>	Tiliaceae	Basswood	N	N	FACU	TD
<i>Torreyochloa pallida</i> var. <i>fernaldii</i>	Poaceae	Pale meadowgrass	N	N	OBL	HP
<i>Torreyochloa pallida</i> var. <i>pallida</i>	Poaceae	Pale meadowgrass	N	N	OBL	HP
<i>Toxicodendron radicans</i>	Anacardiaceae	Poison-ivy	N	N	FAC	VW
<i>Tragopogon dubius</i>	Asteraceae	Yellow goatsbeard	I	N	N	HB
<i>Triadenum virginicum</i>	Clusiaceae	Marsh St. John's-wort	N	N	OBL	HP
<i>Trientalis borealis</i>	Primulaceae	Star-flower	N	N	FAC	HP

THE NESCOPECK CREEK WATERSHED ASSESSMENT

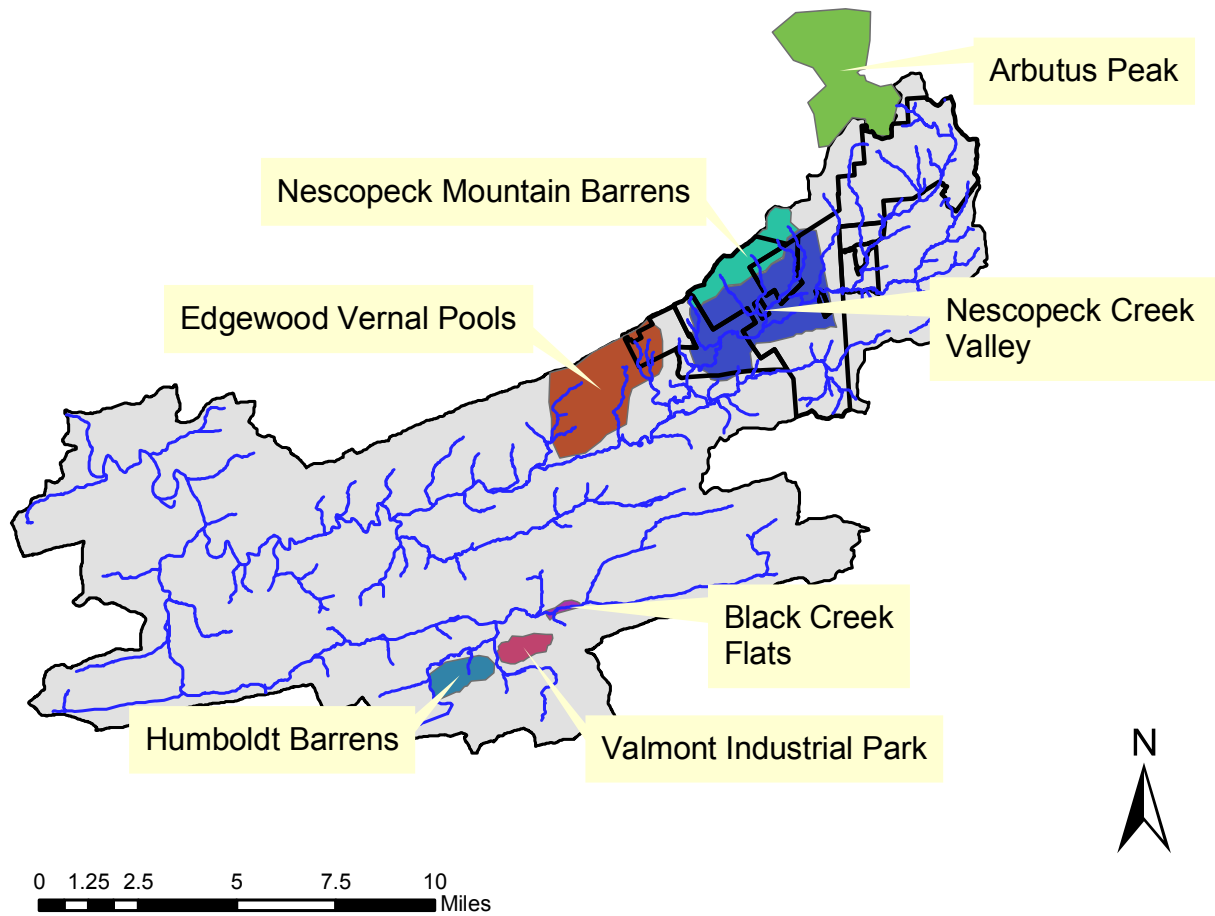
Scientific name	Family name	Common name	N/I	State	Wetlands	Growth
<i>Trifolium pratense</i>	Fabaceae	Red clover	I	N	FACU-	HP
<i>Trillium erectum</i> var. <i>erectum</i>	Liliaceae	Purple trillium	N	N	FACU-	HP
<i>Trillium undulatum</i>	Liliaceae	Painted trillium	N	N	FACU-	HP
<i>Tsuga canadensis</i>	Pinaceae	Canada hemlock	N	N	FACU	TE
<i>Typha latifolia</i>	Typhaceae	Common cat-tail	N	N	OBL	HP
<i>Ulmus americana</i>	Ulmaceae	American elm	N	N	FACW-	TD
<i>Ulmus rubra</i>	Ulmaceae	Red elm	N	N	FAC-	TD
<i>Utricularia geminiscapa</i>	Lentibulariaceae	Bladderwort	N	N/TU	OBL	HP
<i>Utricularia macrorhiza</i>	Lentibulariaceae	Common bladderwort	N	N	OBL	HP
<i>Uvularia perfoliata</i>	Liliaceae	Bellwort	N	N	FACU	HP
<i>Uvularia sessilifolia</i>	Liliaceae	Bellwort	N	N	FACU-	HP
<i>Vaccinium angustifolium</i>	Ericaceae	Low sweet blueberry	N	N	FACU-	SD
<i>Vaccinium corymbosum</i>	Ericaceae	Highbush blueberry	N	N	FACW-	SD
<i>Vaccinium macrocarpon</i>	Ericaceae	Cranberry	N	N	OBL	SE
<i>Vaccinium pallidum</i>	Ericaceae	Lowbush blueberry	N	N	N	SD
<i>Vaccinium stamineum</i>	Ericaceae	Deerberry	N	N	FACU-	SD
<i>Veratrum viride</i>	Liliaceae	False hellebore	N	N	FACW+	HP
<i>Verbascum blattaria</i>	Scrophulariaceae	Moth mullein	I	N	UPL	HB
<i>Verbascum thapsus</i>	Scrophulariaceae	Common mullein	I	N	N	HB
<i>Verbena stricta</i>	Verbenaceae	Hoary vervain	I	N	N	HP
<i>Veronica americana</i>	Scrophulariaceae	American brooklime	N	N	OBL	HP
<i>Veronica arvensis</i>	Scrophulariaceae	Corn speedwell	I	N	N	HA
<i>Veronica officinalis</i>	Scrophulariaceae	Common speedwell	N	N	FACU-	HP
<i>Veronica scutellata</i>	Scrophulariaceae	Marsh speedwell	N	N	OBL	HP
<i>Viburnum acerifolium</i>	Caprifoliaceae	Maple-leaved viburnum	N	N	N	SD
<i>Viburnum cassinoides</i>	Caprifoliaceae	Witherod	N	N	FACW	SD
<i>Viburnum lantanooides</i>	Caprifoliaceae	Hobblebush	N	N	FAC	SD
<i>Viburnum rafinesquianum</i>	Caprifoliaceae	Downy arrow-wood	N	N	N	SD
<i>Viburnum recognitum</i>	Caprifoliaceae	Northern arrow-wood	N	N	FACW-	SD
<i>Viola blanda</i>	Violaceae	Sweet white violet	N	N	FACW	HP
<i>Viola canadensis</i> var. <i>canadensis</i>	Violaceae	Canada violet	N	N	N	HP
<i>Viola cucullata</i>	Violaceae	Blue marsh violet	N	N	FACW+	HP
<i>Viola hirsutula</i>	Violaceae	Southern wood violet	N	N	N	HP
<i>Viola labradorica</i>	Violaceae	American dog violet	N	N	FACW	HP
<i>Viola macloskeyi</i> ssp. <i>pallens</i>	Violaceae	Sweet white violet	N	N	OBL	HP
<i>Viola pubescens</i> var. <i>pubescens</i>	Violaceae	Downy yellow violet	N	N	FACU-	HP
<i>Viola rotundifolia</i>	Violaceae	Round-leaved violet	N	N	FAC+	HP
<i>Viola sagittata</i> var. <i>sagittata</i>	Violaceae	Arrow-leaved violet	N	N	FACW	HP
<i>Viola sororia</i> var. <i>sororia</i>	Violaceae	Common blue violet	N	N	FAC-	HP
<i>Vitis aestivalis</i>	Vitaceae	Summer grape	N	N	FACU	VW
<i>Waldsteinia fragarioides</i>	Rosaceae	Barren strawberry	N	N	N	HP
<i>Wolffia brasiliensis</i>	Lemnaceae	Pointed water-meal	N	N	OBL	HP
<i>Zizia aurea</i>	Apiaceae	Golden-alexander	N	N	FAC	HP

Table A.7 Plant species of the Nescopeck State Park (Source: The Nescopeck State Park, 2002. A. Rhoads & T. Block).

Appendix B: Landscape Analysis Maps

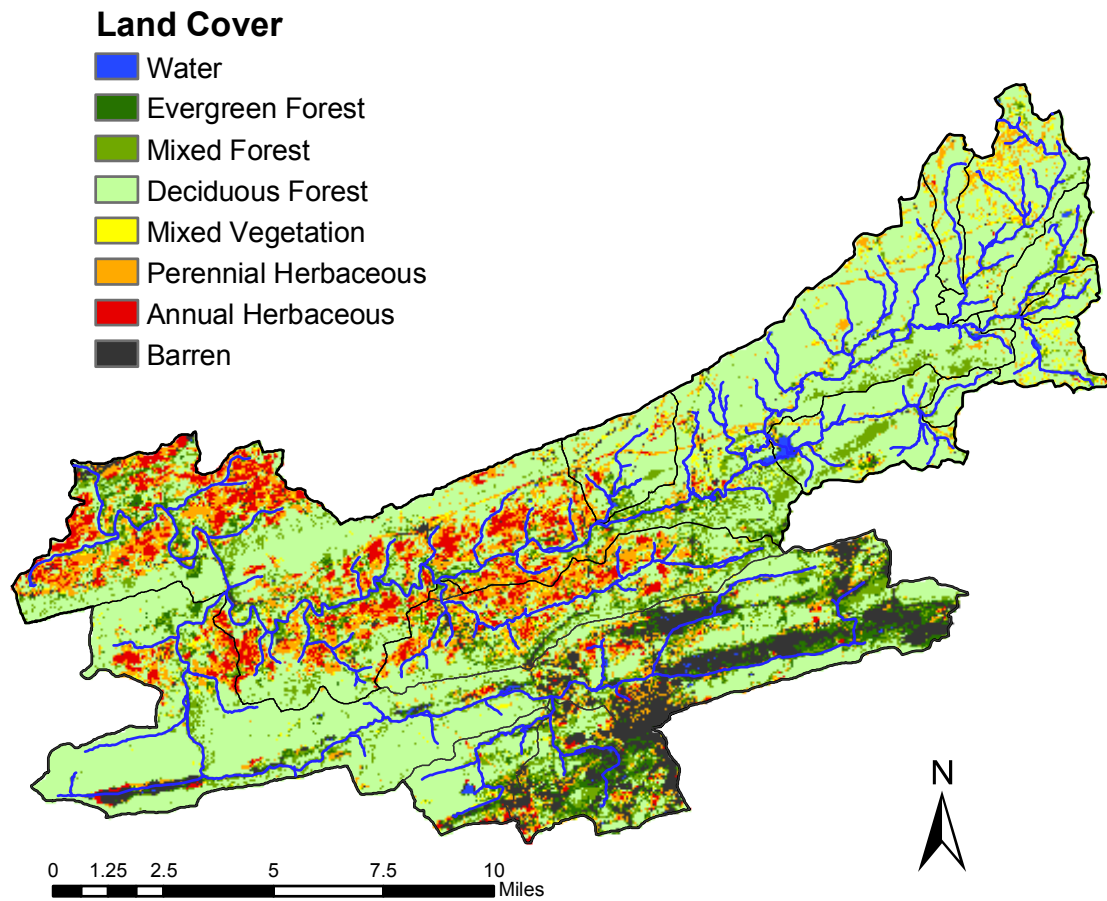
THE NESCOPECK CREEK WATERSHED ASSESSMENT

THE NESCOPECK CREEK WATERSHED ASSESSMENT



Designated Natural Areas (Source: Pennsylvania Science Office of The Nature Conservancy).

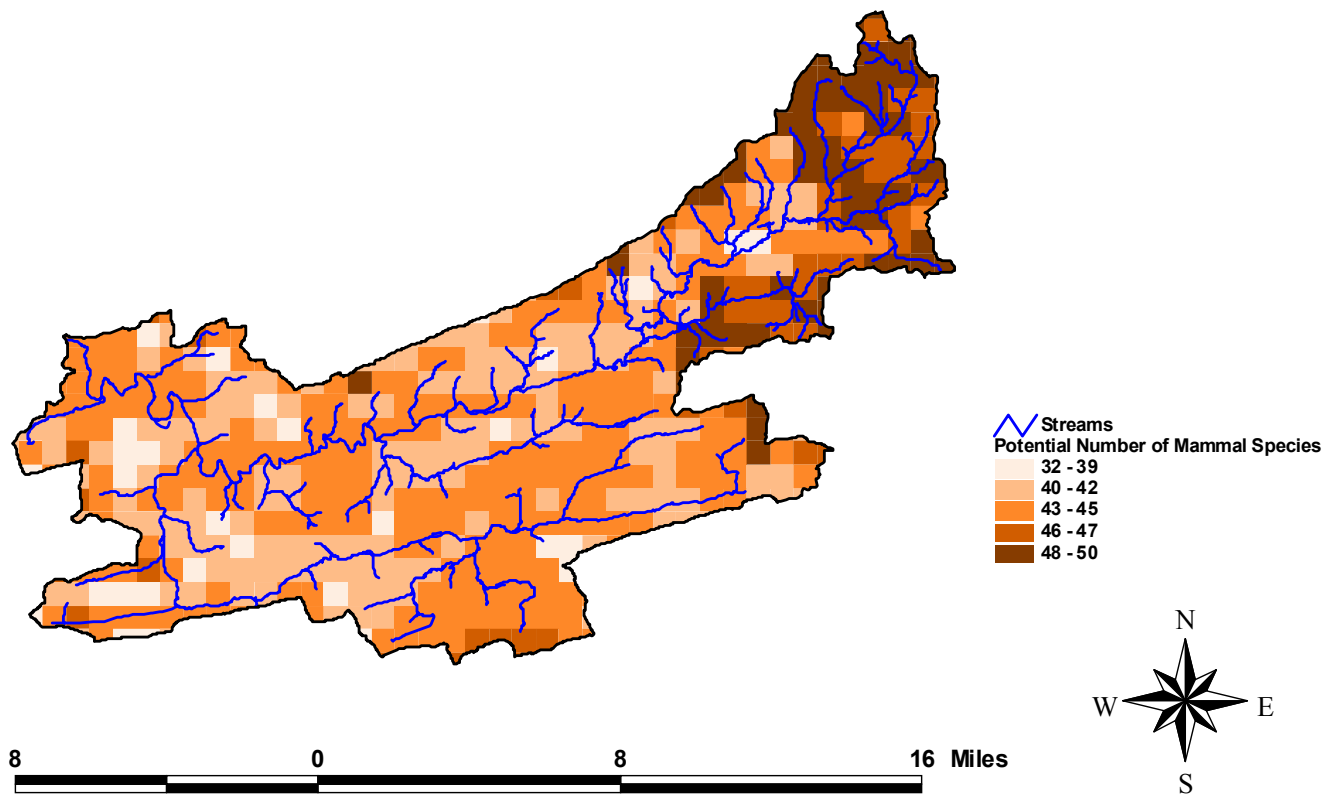
THE NESCOPECK CREEK WATERSHED ASSESSMENT



Land Cover Analysis.

THE NESCOPECK CREEK WATERSHED ASSESSMENT

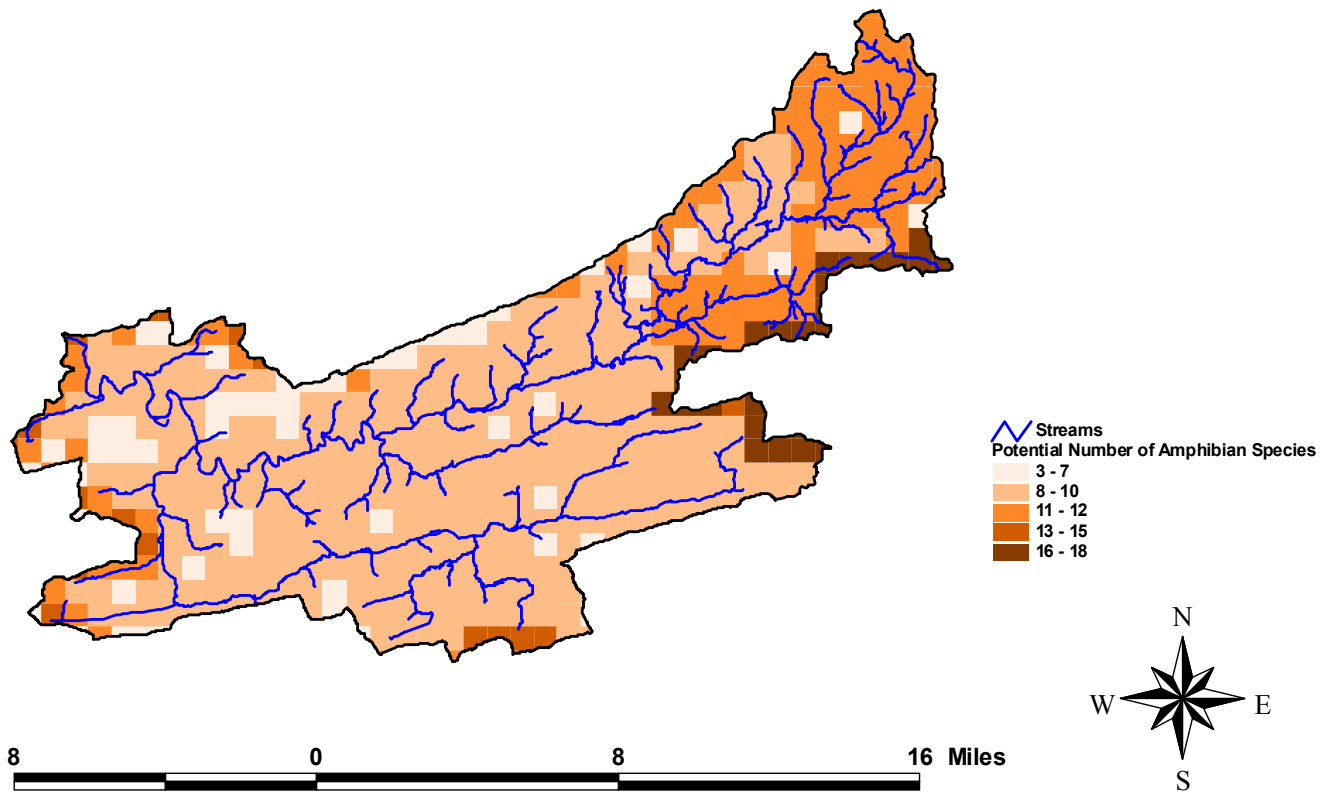
THE NESCOPECK CREEK WATERSHED ASSESSMENT



Potential Mammal species richness.

THE NESCOPECK CREEK WATERSHED ASSESSMENT

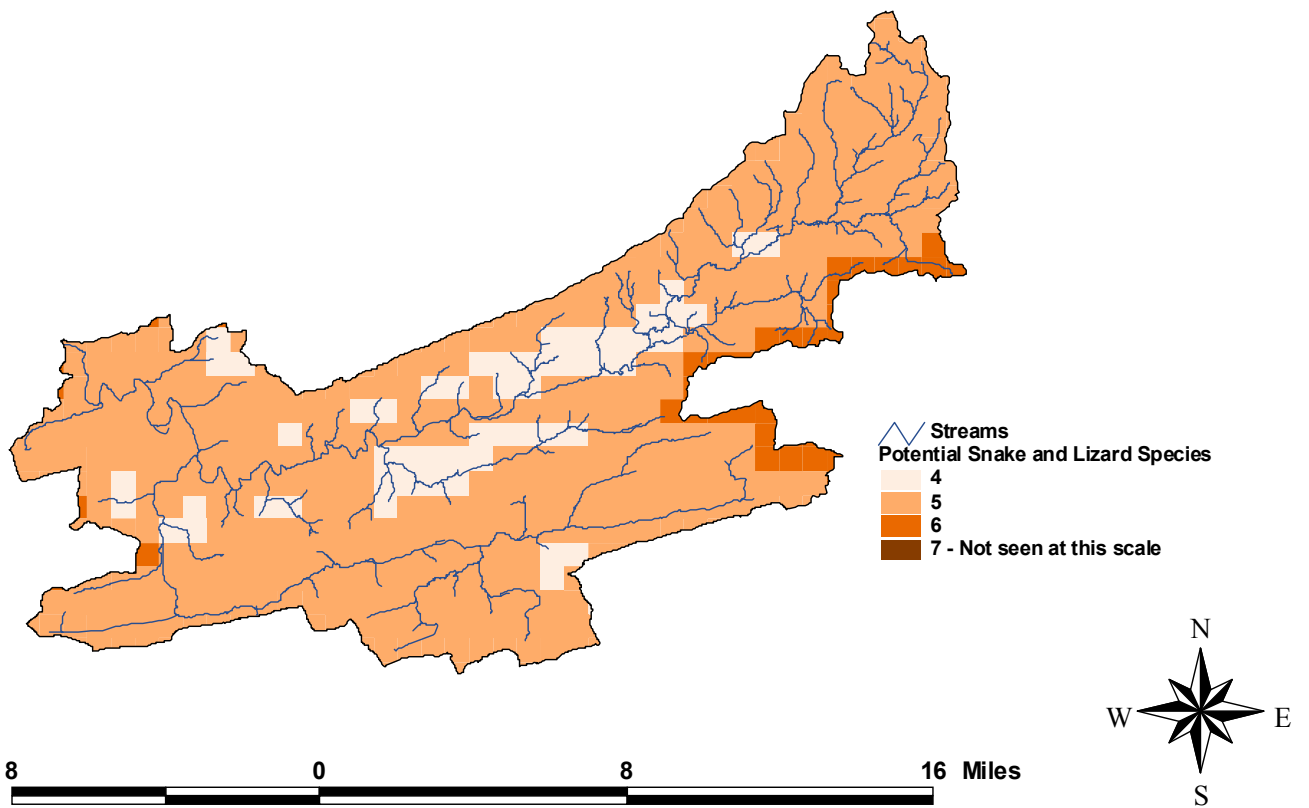
THE NESCOPECK CREEK WATERSHED ASSESSMENT



Potential Amphibian species richness.

THE NESCOPECK CREEK WATERSHED ASSESSMENT

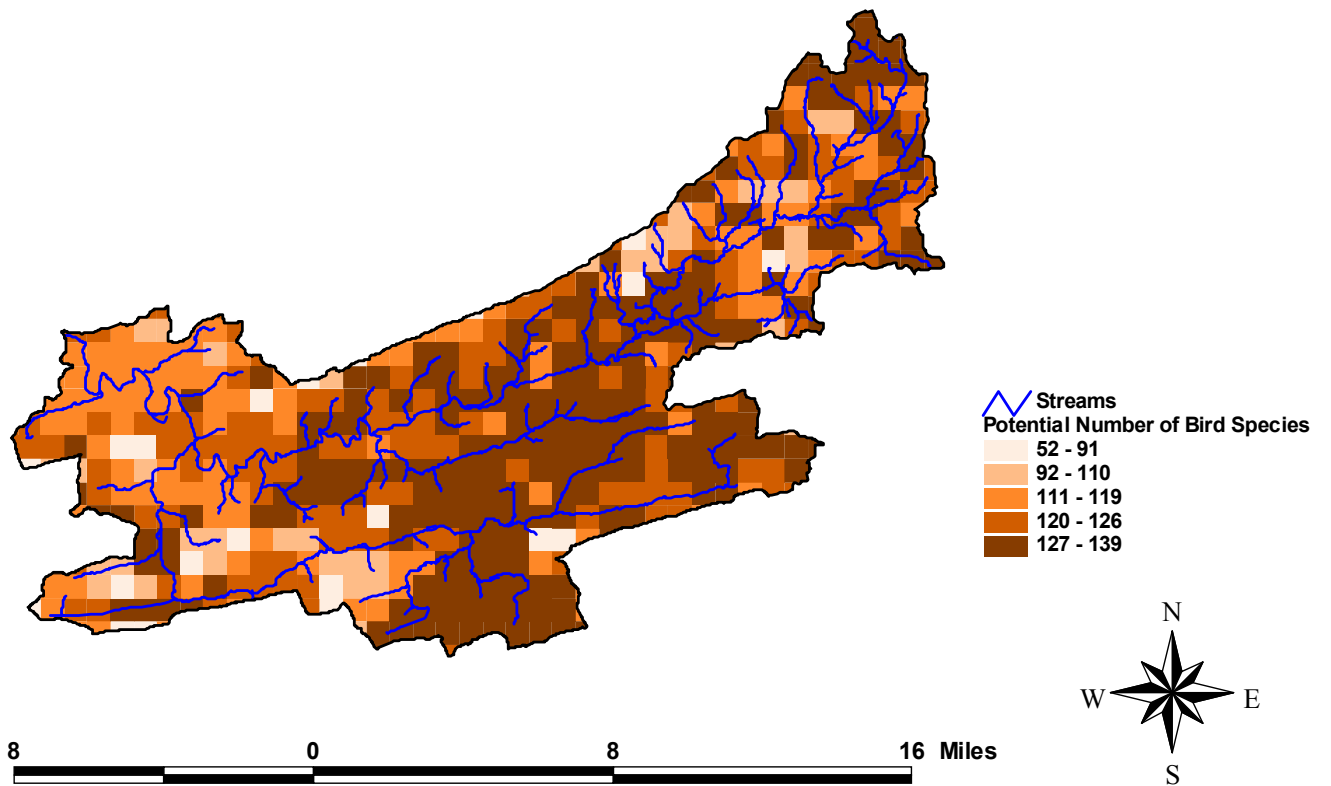
THE NESCOPECK CREEK WATERSHED ASSESSMENT



Potential Snake and Lizard species richness.

THE NESCOPECK CREEK WATERSHED ASSESSMENT

THE NESCOPECK CREEK WATERSHED ASSESSMENT



Potential Bird species richness.

Appendix C: Water Related Data

THE NESCOPECK CREEK WATERSHED ASSESSMENT

Nescopeck Watershed Dams and Impoundments									
DEP Dam No.	Dam Name	Dam Purpose	Dam Type	Height (ft.)	Normal Storage Capacity (acre-feet)	Normal Surface Area (acres)	Drainage Area (sq. miles)	Dam Length (ft.)	USGS Quad Map
19-072	Knecht Dam	Recreation	Earthfill	12	28	8	0.7	340	Mifflinville
40-061	Humboldt	Water Supply	Earthfill	41	442	35	0.6	974	Conyngham
40-062	Oneida Dam		Earthfill	12	15	7	0.15	900	Hazleton
40-157	Olympus Lake	Recreation	Earthfill	24	92	16	0.6	265	White Haven
40-174	Unnamed		Stone Masonry	14	12	3	1.8	-	Freeland
40-201	Rumbel Dam		Earthfill	10	0*	0*	4.6	-	Freeland
40-212	Ray T Mantz	Recreation	Earthfill	13	129	30	2.3	425	White Haven
40-215	Lake Irena	Recreation	Earthfill	23.6	62	13	1	690	Conyngham
40-221	Lake Francis		Earthfill	22	-	-	-	-	Freeland
40-225	Beech Mountain Lake	Recreation	Earthfill	29	1546	154	8.47	1500	Freeland

Table C.1 Impoundments within the Nescopeck Creek watershed.

Station	Hardness	Copper			Lead			Zinc		
		CCC	CMC	Conc.	CCC	CMC	Conc.	CCC	CMC	Conc.
Jeddo	79	9.67	14.2	63	2.36	60.48	3.3	86.8	95.84	621
LN10	366	27.28	44.56	33	11.05	283.66	3.2	242.81	268.08	606
LN11	280	28.5	46.76	31	11.8	302.8	2.9	253.6	279.99	486
LM12	270	27.63	45.19	29	11.27	289.11	2.8	245.9	271.49	466
NC5	137	15.63	23.85	13	4.75	121.89	1.5	138.39	152.8	206
NC6	113	13.13	19.89	12	3.72	95.39	1.2	117.56	129.79	169
BC14	47	6.2	8.7	<10	1.22	31.23	3.3	55.9	61.72	111
BC15	24	3.49	4.62	<10	0.52	13.27	3.4	31.63	34.92	27
BC16	24	3.49	4.62	<10	0.52	13.27	3.2	31.63	34.92	21
BC17	14	2.2	2.78	<10	0.26	6.68	2.1	20.03	22.12	27
BC18	34	4.7	6.41	<10	0.81	20.68	1.5	42.49	46.91	118
Rock Glen	213	22.56	36.14	97	8.33	213.78	5.4	201.14	222.08	1050
BC19	50	6.54	9.22	16	1.32	33.78	1.5	58.91	65.04	205
NC7	101	11.92	17.89	12	3.22	82.69	1.2	106.89	118.01	162
NC8	96	11.42	17.06	16	3.02	77.51	1.4	102.39	113.04	173

Table C.2 Concentrations of copper, lead, and zinc determined by the DEP at sites along the Little Nescopeck B, Black Creek, Nescopeck Creek and the Jeddo Tunnel and Rock Glen outfalls.

Historic Flow Data: Nescopeck Creek Watershed

Source: Page, L.V., and L.C. Shaw. 1977. Water Resources Bulletin No. 12, Low Flow Characteristics of Pennsylvania Stream. The Pennsylvania Department of Environmental Resources, Harrisburg, PA.

01538500 Nescopeck Creek Near St. Johns, PA.

Location: Lat. 41°01'15", Long. 76°00'40", Luzerne County, at highway bridge, 0.5 mi southwest of St. Johns.

Drainage Area. 49 mi², approximately.

Tributary To. Susquehanna River.

Average Discharge. 7 years, 93.7 ft³/s.

Extremes. 1919-26: Maximum discharge, 2,540 ft³/s Mar. 13, 1920; minimum observed, 5.2 ft³/s Aug. 4, 1924.

Low-Flow Frequency. Estimated average annual minimum discharges for seven consecutive days.

Recurrence interval	2 years	10 years
Discharge	10 ft ³ /s	6.0 ft ³ /s

Basis of Estimate. Correlated with Wapwallopen Creek near Wapwallopen using current daily discharges.

Duration of Daily Flow. Period: 1920-26

Discharge, in cubic feet per second, which was equaled or exceeded for indicated percent of time													
percent	2	5	10	20	30	40	50	60	70	80	90	95	98
ft ³ /s	450	310	230	150	100	72	52	37	26	19	13	11	8.8

01538520 Little Nescopeck Creek at Sybertsville, PA.

Location: Lat. 41°00'12", Long. 76°04'25", Luzerne County, at bridge at Sybertsville on county road, 0.6 mi upstream from mouth and 6 mi east of Berwick.

Drainage Area. 13.8 mi².

Tributary To. Nescopeck Creek.

Low-Flow Frequency. Estimated average annual minimum discharges for seven consecutive days.

Recurrence interval	2 years	10 years
Discharge	0.03 ft ³ /s	No flow

Basis of Estimate. Correlated with Wapwallopen Creek near Wapwallopen using eight discharge measurements made in the period 1970-73.

THE NESCOPECK CREEK WATERSHED ASSESSMENT

01538600 Nescopeck Creek at Nescopeck, PA.

Location: Lat. 41°02'46", Long. 76°13'28", Luzerne County, at railroad in Nescopeck.

Drainage Area. 171 mi².

Tributary To. Susquehanna River.

Miscellaneous Measurements. July 22, 1949, 60.2 ft³/s; Oct. 28, 1949, 62.3 ft³/s; Sept. 21, 1950, 52 ft³/s.

Appendix D: Fact Sheets